



GATESHEAD  
local **safeguarding**  
**children** board

# Gateshead LSCB Annual Report

2015-2016



## **Contents**

<b>1. INTRODUCTION AND WELCOME</b>	Page 3
<b>2. EXECUTIVE SUMMARY</b>	Page 5
<b>3. GATESHEAD AND GATESHEAD LSCB</b>	Page 8
<b>4. STRUCTURE AND MEMBERSHIP</b>	Page 10
<b>5. REVIEW OF FINANCES AND RESOURCES</b>	Page 12
<b>6. EFFECTIVENESS OF SAFEGUARDING ARRANGMENTS FOR CHILDREN AND YOUNG PEOPLE IN GATESHEAD - ACTIVITY IN 2015-2016</b>	Page 13

**APPENDIX 1 – Our meetings**

**APPENDIX 2 – Partner agency progress in 2015-2016**

**APPENDIX 3 – Section 11 audit**

**APPENDIX 4 – Learning and improvement activity**

**APPENDIX 5 – Sub Group updates**

**APPENDIX 6 – Glossary**

## 1. INTRODUCTION AND WELCOME



Gary Hetherington LSCB Independent Chair 2015-2016 and Councillor Angela Douglas, Cabinet Member for Children and Young People

### Introduction – Councillor Angela Douglas, Cabinet Member for Children and Young People

I am pleased to introduce the Gateshead Local Safeguarding Children Board (LSCB) Annual Report for 2015-2016.

As the Cabinet Member for Children and Young People for Gateshead Council I hold the statutory responsibility, along with Alison Elliott, Director of Children’s Services, to ensure that children at risk of harm receive quality services to protect and support them and their families.

The previous twelve months have seen unprecedented challenges for agencies in Gateshead in terms of resources and there is no doubt that these challenges will continue into 2016-2017 and beyond. However, we continue to see excellent practice and commitment from professionals in Gateshead to keep our children safe. As this report will set out, the Local Authority and the LSCB were inspected by Ofsted in the autumn and this inspection found that children are at the heart of good practice in Gateshead and multi-agency practice was judged to be highly effective overall.

The LSCB holds a key and central role in leading and coordinating the work of agencies in Gateshead who work to keep children and young people safe and Ofsted acknowledged the clear strong commitment from key statutory agencies. As part of ongoing development work and a challenge of its own arrangements, the Board had already identified the areas for improvement noted by Ofsted and work has already taken place to address a number of these areas. The LSCB continues to **lead, challenge and learn** and asks its partners to do the same.

I am confident that the LSCB and its partners will continue to develop in 2016-2017 and continue to strive to improve outcomes for every child in Gateshead, but particularly our most vulnerable. I look forward to being a part of this improvement journey and continuing to support arrangements to safeguard and protect our children over the next 12 months.

**Introduction – Alison Elliott, Interim Strategic Director, Care Wellbeing and Learning**



This year has seen significant work undertaken by the LSCB within an increasingly challenging environment, not least an Ofsted inspection and the continued austerity across the public sector. The Ofsted judgement of the LSCB, that it requires improvement to be good, reflects the positive contribution of the LSCB to safeguarding children in Gateshead and confirms the areas of improvement that the LSCB had already identified. Partners continue to commit to and participate in the LSCB and it is this partnership that ensures children in Gateshead are safe and supported to thrive.

Next year the LSCB will focus on a number of key strategic areas that reflect the recommendations from Ofsted, but will also focus on specific areas of practice to ensure that the Board has a real positive impact on children's lives.

The Board is grateful for the commitment of three new lay members and as always, is grateful to the Board Business Manager and the Chair for driving forward the agenda and keeping the focus on making a difference to children.

## 2. EXECUTIVE SUMMARY

As set out in *Working Together to Safeguard Children* (2015), every Local Safeguarding Children Board (LSCB) is required to produce and publish an annual report on the effectiveness of safeguarding in the local area. This report sets out the arrangements to safeguard and promote the welfare of children in Gateshead and provides an assessment of those arrangements. This report also sets out how we discharge our functions as set out in *Working Together to Safeguard Children* (2015).

2015-2016 has been a busy year for us. As well as “business as usual” we were inspected by Ofsted alongside services to safeguard children in Gateshead Council. Whilst Ofsted were happy that we were fulfilling our statutory responsibilities and had a clear, strong commitment from our partners, they judged that we require improvement to be “good”. They found that a lot of the work that we are doing is done well, and we are moving in the right direction, however there were seven recommendations made to strengthen our performance to make us more effective. We’ve already started work to address these recommendations and have achieved some of them, for example we now have three active lay members on the Board to strengthen our links with the local community (we share those lay members with the Safeguarding Adults Board to help strengthen our links with them too) and we’ve strengthened links with the Jewish community and the Health and Wellbeing Board. We’re also strengthening our oversight of frontline practice by receiving regular updates on single-agency audits undertaken by our partners.

Throughout 2015-2016 we continued to work towards our priorities of **Leadership**, **Challenge** and **Learning**, which are part of our three year business plan and help us to ensure that our work impacts on the children of Gateshead by improving outcomes. We arranged a sub-regional event in Gateshead for 500 practitioners and managers to raise awareness and understanding of Child Sexual Exploitation (CSE) and we undertook a detailed inquiry into CSE to ensure that practice is fit for purpose. We also trained 700 taxi drivers so that they could be more aware of vulnerable passengers and CSE in particular. Ultimately, the more people who are aware of how to spot CSE and how to respond, the better the outcomes are for those children at risk. We reviewed our own arrangements to ensure that we were working as effectively as possible and drew on national best practice to support this. We also continued to develop our Learning and Improvement Framework to make sure that the lessons from frontline practice are used to strengthen practice in the future. We also started our programme of “mini-peer reviews” so that we could learn as a Board and single agencies from each other and encourage challenge. This will help us to work together even more effectively to improve outcomes for children in the borough and really make a difference.

Our sub groups also worked hard in 2015-2016. We led on areas like updating procedures, updating the CSE strategy, learning from specific cases, learning from child deaths in the borough and delivering high quality training to frontline professionals.

We received a number of reports in 2015-2016 which allowed us to understand frontline practice and challenge this practice where necessary. This included reports on Novel Psychoactive Substances (also known as “Legal Highs”), the “Dark Web”, extremism, high risk adolescents and children convicted of sex offences. By challenging practice we are confident that we have made a positive impact on outcomes for children.

We carried out a “section 11 audit” which told us that on the whole, our LSCB partner agencies and schools are meeting their statutory requirements to keep children and young people safe and have really effective arrangements in place that really make a difference to children’s lives. A number of our partners were also inspected in 2015-2016 and the outcomes were, on the whole, really positive. Keeping children safe is at the centre of what many of the agencies in Gateshead do, and generally we do it really well. Inspectors found that our partners are having a positive impact on the lives of children in Gateshead and we’re working together to keep them safe.

Our data tells us that we have had:

- A 5.8% increase in the number of children who are subject to child protection plans at year end compared with the previous year
- A slight decrease in the numbers of children subject to child protection plans under the category of neglect
- Continuing high numbers of unborn babies subject to child protection plans and this ensures timely decision making and support for these children
- A sustained decrease in the number of re-referrals to Children’s Social Care and our figures are lower than the regional and national averages. This suggests that families are more likely to receive the services they need to keep children safe when they first come to the attention of Children’s Social Care
- A 38% increase in the numbers of child protection enquiries (section 47s) completed compared to last year (669 in 2015-2016 compared to 487 last year)
- A 9% increase in Child In Need (CIN) assessments completed (a total figure of 2191 assessments)
- Continuing high numbers of children who are looked after by the local authority and higher than the national average for this indicator
- Higher numbers than expected (for our population size) of children being admitted to hospital for episodes of self-harm and we’re going to continue work around this into the future

Our young people tell us that, on the whole, Gateshead is a safe place to live and go to school. The majority of young people that we’ve spoken to are confident that they would know what to do if they didn’t feel safe at home, at school or in the community and they shared that our schools are good at telling them how to keep themselves safe. Some young people reported that they’re aware of some areas being less safe than others, e.g. there are certain parks that young people avoid due to older teenagers and adults congregating there and using alcohol and drugs, and they don’t always feel safe on buses and metros late at night. We’ll be sharing the detail of this with relevant partners to try and make these areas of Gateshead safer or improve the perception of young people.

We will continue to work hard, both as a partnership and single agencies, in 2016-2017 and build on the work we’ve done over the last 12 months to make sure that we improve outcomes for children in Gateshead. Our vision is that every child should grow up in a loving and secure environment, which is free from abuse, neglect and crime, enabling them to enjoy good health and fulfil their social and educational potential and we are confident that our robust partnership arrangements can support that.

## Gateshead LSCB in numbers in 2015-2016

There are <b>40,100</b> children living in Gateshead (20% of the total population)	<b>20.5%</b> of our children live in poverty (slightly less than last year but higher than the national average)	<b>8.62%</b> of school age children are from an ethnic minority <b>6.2%</b> of our children speak a language other than English as their first language	<b>23,848</b> children attend schools in Gateshead (not including Emmanuel College or the Jewish schools)
<b>4846</b> children in Gateshead receive free school meals ( <b>22%</b> of all children, which is an increase)	<b>68.1</b> children per 10,000 are currently subject to child protection plans	We've seen a <b>5.8%</b> increase in the number of CP plans this year – we're still higher than the national and regional averages	<b>61.9%</b> of our child protection plans were due to neglect ( <b>169</b> cases)
During the course of the year, <b>66</b> unborn babies were made subject to child protection plans due to concerns about their pregnant mother or family	Children's Social Care received <b>8943</b> "contacts" contacts from people worried about a child in Gateshead	We carried out <b>669</b> s47s – an <b>increase</b> of <b>187</b> from last year <b>99.7%</b> were completed within timescale	<b>85.8</b> children per 10,000 are currently looked after by Gateshead Council
<b>99.4%</b> of our LAC reviews and <b>100%</b> of our Review Child Protection Conferences were held within timescales	<b>87.8%</b> of our schools are judged to be good or outstanding	<b>100%</b> of schools are now signed up to Operation Encompass – a new project to support children who witness domestic abuse at home	Police shared information with schools via Operation Encompass regarding <b>1,101</b> children to ensure that appropriate support was in place
<b>90%</b> of our GPs practices were represented at "level 3" child protection training (28 out of 31 practices)	Over <b>700</b> taxi drivers attended training delivered by the LSCB and Police on CSE to help them understand how to keep vulnerable passengers safe	There were <b>928</b> episodes where a young person from Gateshead was reported missing from home or care to the police. <b>71%</b> of them were "in care"	The cases of <b>43</b> young people were discussed at the LSCB's Missing, Sexually Exploited and Trafficked Sub Group (MSET) due to concerns about them
We didn't publish any Serious Case Reviews or initiate any new ones this year. We have looked at a few cases in more detail to try and improve practice though	<b>1151</b> practitioners attended a LSCB training event – this is an increase on last year	Gateshead's under 18 conceptions have decreased by <b>40%</b> since 1998	Gateshead College delivered a Counter Extremism and Radicalisation tutorial to <b>1,795</b> young people and a British Values tutorial to <b>1,746</b> young people

### 3. GATESHEAD AND GATESHEAD LSCB

#### 3.1 The Borough of Gateshead

Geographically, we are the largest of the five Tyne and Wear metropolitan authorities. We cover an area of 55 square miles including a mix of urban, rural and busy commercial areas. Many of our population live in urban areas where there are areas of industrial decline and high levels of deprivation,



Our population is largely of white British origin. However we do have a large orthodox Jewish community of approximately 4,500 people, including just over 1,000 school age children and 1,500 young people in further education (the Jewish further education colleges in Gateshead play host to students from all over the world). 8.62% of our school age children are recorded as being from an ethnic minority group (up from 7.87% last year) and 6.2% of our school age children speak a language other than English as their first language (also an increase from 5.2% last year).

According to the latest data there are more than 40,100 children under 18 living in Gateshead which accounts for approximately 20% of our overall population of 200,500. The latest child poverty data (2013) shows that 20.5% of our children are classed as living in poverty. This is a decrease from the previous figure and may not fully reflect the current economic climate, but is based on average levels of income. Nationally 18% of children are classed as living in poverty, so Gateshead is higher than the national average, however in the North East overall this is 22.2%. This varies from 16.8% in Northumberland to 31.8% in Middlesbrough. 4846 of our children are in receipt of free school meals (22.3% of the population), which is a slight increase from last year.

Our statutory mainstream school age population in 2015 was 23,848 (not including Emmanuel College and Jewish schools). This is an increase from 23,592 last year and includes 14,674 primary school children, 8,616 attending secondary schools, 469 at special schools and 89 at the Pupil Referral Unit (PRU) – a slight decrease in secondary school numbers but an increase in primary school numbers and a significant increase in numbers at the PRU. Of the 74 schools in Gateshead inspected by Ofsted since January 2012, 87.8% of them have been judged as good or outstanding (a slight increase from 86.5% reported last year).



### 3.2 Gateshead LSCB

LSCBs are multi-agency statutory partnerships established under Section 13 of the Children Act 2004. More information on the role and function of LSCBs can be found on our website [www.gateshead.gov.uk/LSCB](http://www.gateshead.gov.uk/LSCB)

We were established in 2005 (having replaced the Gateshead Area Child Protection Committee) to take responsibility for core inter-agency child protection work in the Borough, whilst also embracing the wider safeguarding duties established in the Children Act 2004.

*Our vision is that every child should grow up in a loving and secure environment, which is free from abuse, neglect and crime, enabling them to enjoy good health and fulfil their social and educational potential*

Our aim is to build upon and strengthen existing partnerships and to engage with the community. In furthering this vision, the LSCB's core objectives and functions are focused on safeguarding children and young people as set out in *Working Together to Safeguard Children* (2015). Safeguarding is a multi-dimensional and fluid interactive process and, as such, the LSCB formulates its strategies to afford as wide an audience as possible a voice in promoting a safer environment for the children and young people of Gateshead.

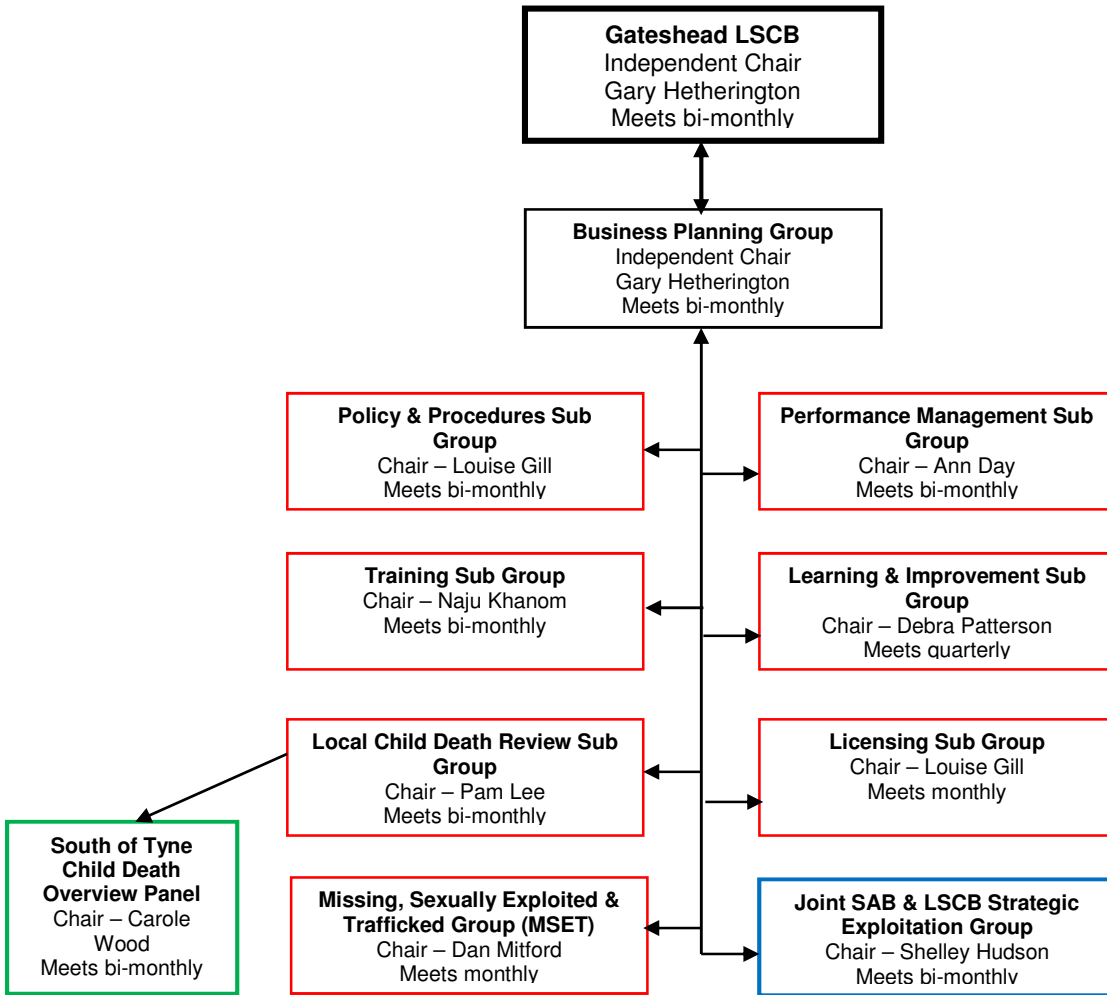
The role of the LSCB is to **lead, challenge** and support **learning** and this is reinforced by our own Business Plan. Gateshead LSCB has a three-year approach to facilitate longer term planning and focus business on the specific role and remit of the Board to ensure that the welfare of children is safeguarded and protected, as set out in *Working Together to Safeguard Children* (2015) and the Children Act 2004.

#### 4. STRUCTURE AND MEMBERSHIP

##### 4.1 Structure

Our full Board meets six times a year and is supported by a Business Planning Group and eight sub groups, one of which is shared with the Safeguarding Adults Board. Each sub group has its own Terms of Reference and work plan and is expected to report to the LSCB three times a year and make a contribution to the annual report.

The following diagram outlines our Board and sub group structure as of 31 March 2016:



## 4.2 Our membership

We review our membership every year to make sure that the right people are at the right meetings. Our Independent Chair also monitors member attendance, contributions and associated issues.

The following table sets out our membership on 31 March 2016:

Membership of the Board	
<b>Independent Chair</b>	Gary Hetherington
<b>LSCB Business Manager</b>	Louise Gill
<b>Lay Member</b>	Rebecca Dixon
	Mike Jones
	Richard Marshall
Organisation	Representative
<b>Cafcass</b>	Service Manager
<b>Gateshead College</b>	Director of Student Experience
<b>Gateshead Council</b>	Business Manager – Safer Communities
	Cabinet Member for Children & Young People
	Housing Services Manager
	Interim Strategic Director, Care, Wellbeing & Learning
	MASH Business Manager
	Public Health Programme Lead
	Service Director – Children & Families Support
	Service Director – Children’s Commissioning - <i>vacant post</i>
	Service Director – Corporate Services and Governance
	Service Director – Learning and Schools
	Service Director – Social Work, Children & Families
	Service Manager – Children’s Commissioning
Service Manager – Early Years & Childcare	
<b>Gateshead Health NHS FT (GHNFT)</b>	Workforce Development Advisor
	Designated Doctor – <i>vacant post in 2015-2016</i>
<b>Gateshead Safeguarding Adults Board</b>	Director of Nursing
	SAB Business Manager
<b>Jewish Schools representative</b>	Administrator (designated professional)
<b>National Probation Service</b>	Head of National Probation Service South of Tyne
<b>NHS Newcastle Gateshead CCG</b>	Designated Nurse, Safeguarding Children
	Director of Nursing
<b>Northumbria CRC</b>	Director of Offender Management
<b>Northumbria Police</b>	Detective Superintendent – Safeguarding Department
<b>NTW NHS Foundation Trust</b>	Group Medical Director for Specialist Care
<b>Primary School representative</b>	Head Teacher
	Head Teacher
<b>Secondary Schools representative</b>	Head Teacher
<b>Special Schools representative</b>	Head of School,
<b>South Tyneside NHS FT</b>	Director of Nursing and Patient Safety
	Strategic Lead Safer Care
<b>UK Visas and Immigration</b>	Senior Asylum Caseworker

Links are also maintained with NHS England and North East Ambulance Service via the CCG and with Tyne and Wear Fire and Rescue Service

### 4.3 Our meetings

There are a number of standing agenda items on every LSCB meeting agenda, and these are:

- Members' updates – an opportunity for Board members to provide verbal updates on items impacting on their agencies and partnerships and safeguarding children including organisational change, campaign update, media items and response and inspection updates
- Sub group updates (including regular performance reports and the LSCB data-set)
- Update on Child Sexual Exploitation (CSE)
- Business Manager and Business Planning Group report

From 2016-2017 onwards we will also review single agency audits at every meeting to strengthen our oversight of partner agency frontline practice.

Some of the issues we discussed at our meetings in 2015-2016 included Foetal Alcohol Spectrum Disorder, Children Missing Education, the role of GPs in safeguarding, preventing extremism and NPS ("legal highs"). Appendix 1 of this report contains more detail about our agenda items this year.

We've set our work plan for 2016-2017 and this is monitored at each meeting of the Business Planning Group to make sure we're discussing the most important and relevant issues in terms of keeping children and young people safe in Gateshead.

## 5. REVIEW OF FINANCES AND RESOURCES

Section 15 of the Children Act 2004 sets out that statutory Board partners may:

- Make payments towards expenditure incurred by, or for the purposes connected with, a LSCB directly, or by contributing to a fund out of which payments may be made
- Provide staff, goods, services, accommodation or other resources for purposes connected with a LSCB.

Cafcass, Gateshead Council, National Probation Service, NHS Newcastle Gateshead CCG, Northumbria CRC and Northumbria Police all made contributions to the LSCB in 2015-2016.

Income (£)	
Cafcass	550
Gateshead Council	66,710*
National Probation Service	250
NHS Newcastle Gateshead CCG	44,023
Northumbria Police	5,000
Northumbria CRC	250
<b>TOTAL</b>	<b>116,783</b>

\*The contribution from Gateshead Council includes a £11,430 budget held by Organisational Development to manage the LSCB Multi-Agency Training Programme. This was reported separately previously.

There was a decrease from the 2014-2015 budget (£137,404 in total) and this is due to a reduction in the contribution of Gateshead Council.

In total, £110,120 was spent from the LSCB budget in 2015-2016, with an underspend of £6,663. As previously agreed, this underspend will not be carried forward to 2016-2017 and in real terms represents a slightly smaller contribution from Gateshead Council.

In 2015-2016:

- **£81,992** was spent by the LSCB on salaries and on-costs for the LSCB Business Manager and Admin. Officer
- **£16,243** was spent by the LSCB on fees which included £4,000 on the maintenance of the LSCB Inter-Agency Child Protection Procedures, £1,500 to the National Association of Independent Chairs, £500 to the National Working Group (for CSE) and the remainder was payment to the LSCB Independent Chair
- **£11,430** was spent on the LSCB multi-agency child protection training programme for frontline practitioners and **£4,987** was spent on other training

We didn't spend any money on Serious Case Reviews in 2015-2016 and the budget for Child Death Reviews is shared between Gateshead, Sunderland and South Tyneside Councils and not reported on here.

Expenditure (£)	
Salaries and on costs (Business Manager & Admin Assistant)	81,922
Multi-agency training programme	11,430
Chair's fees	10,243
Other LSCB training e.g. CSE conference	4,987
Inter-agency Child Protection Procedures	4,000
Contribution to National Association of Independent Chairs	1,500
Miscellaneous (pool cars, public transport, phone costs etc.)	1,255
Hospitality	801
Printing, stationery, advertising	645
SCR fees	0
<b>TOTAL</b>	<b>110,120</b>

Partners have been asked to confirm contributions for 2016-2017.

## 6. EFFECTIVENESS OF SAFEGUARDING ARRANGMENTS FOR CHILDREN AND YOUNG PEOPLE IN GATESHEAD - REVIEW OF ACTIVITY IN 2015-2016

### 6.1 Overview and single agency activity

This section of our annual report sets out how effective services are in Gateshead at keeping children and young people safe and what the impact of our work has been in terms of improving outcomes for children and young people. As set out in *Working Together to Safeguard Children* (2015), our objectives are to coordinate and ensure the effectiveness of safeguarding arrangements in the local area. We agreed a new approach for 2014-2017 in a three year Business Plan which was more focused on our specific role and remit in ensuring the welfare of children is safeguarded and protected. Our Business Plan sets out three strategic business priorities: **Leadership**, **Challenge** and **Learning**. Members of the LSCB committed to an approach where the LSCB leads the safeguarding agenda, challenges the work of partner agencies and itself, learns lessons and embeds good practice and is continually influenced by the views of children and young people. We've made progress in

all of these areas to improve safeguarding arrangements and section 6.6 of this report sets out our progress.

Our sub groups have continued to work to their Terms of Reference and work plans and provide regular reports to the Board on their progress. Appendix 5 of this report sets out activity from our sub groups in 2015-2016.

The three priorities of **Leadership, Challenge** and **Learning** extend to both the Board's own work and also that of our partner agencies. Our partners have provided examples and evidence of work where **Leadership, Challenge** and **Learning** has taken place and led to changes in practice and will ultimately improve outcomes. By supporting our partners in this areas we can work together to really make a difference for the children and young people of Gateshead. Appendix 2 of this report provides some examples of progress made by our partners in 2015-2016.

There have been a number of operational developments across our partner agencies in the past 12 months to make services more effective at keeping children safe and improving outcomes. For example, a process is now in place between NTW and Children's Social Care to share information in "real time" so that clinicians have access to the most up to date records and the CCG have carried out a pilot to significantly improve GPs' contribution to CP conferences. These two examples show the impact that improved multi-agency working can have as professionals working with these families are more aware of risks and issues and able to put more effective plans in place. Additional examples can also be found in Appendix 2 of this report.

A number of our partner agencies were inspected in the last twelve months including Gateshead Council, Northumbria Police and some health agencies. On the whole, these inspections were very positive and found effective practice in the borough to keep children safe. Inspectors found effective work to keep children and young people safe from CSE, FGM and Honour Based Violence and joined up working between partners was noted. More detail on these inspections is included in Appendix 2 of this report.

The LSCB was inspected at the same time as the local authority and this is covered in section 6.7 of this report. The full report can be found at <http://reports.ofsted.gov.uk/local-authorities/gateshead>

The following case studies show how our Board partners work within their agencies and together to prioritise safeguarding and improve outcomes for children and young people in the borough and the impact that this can have.

**Case study 1:**

Family G arrived in Gateshead from the Lebanon as part of the Government's Syrian Vulnerable Person's Resettlement Programme in November 2015. A Refugee Resettlement Officer worked with the family, settling them into their new accommodation, ensuring they had access to health and dentistry as well as information about benefits entitled to them. They also helped them access English courses.

Education Support Workers visited the family and, via an interpreter, explained the education process; gathering information about individual children's education and potential needs, any health issues and generally how they were at school as well as discussing any issues or concerns they might have.

The Education Support Worker then arranged an initial visit to their school(s), facilitating a

meeting with the Head Teacher and staff. Transport was provided. Education Support Service also supported children for the first few weeks into their new school, taking them into school, ensuring they understood bus routes, supporting them in lessons, using iPads to address any language issues. A review meeting was held 6 weeks after they began school to review the process of integration with parents and school. The children have settled well into school and are rapidly improving their English. The family have been welcomed into the school community

**Case study 2:**

Mr M attended A&E claiming his drink had been spiked and had a 7 year old boy with him who was still wearing his pyjamas at 11am. Mr M was unsteady on his feet and slurring his speech and went to sleep in the waiting room. Meanwhile the child was seen to be wandering unaccompanied round the A&E department by reception staff. Mr M walked out of the department after 10 minutes (without receiving any treatment) and took the child with him and the reception staff reported the incident to the Named Nurse for Safeguarding Children.

Enquiries were made with Children’s Social Care and it transpired that Mr M had recently been released from prison for drug related offences and a social worker was already allocated to the case. The family denied that it was their child in A&E so the social worker attended the hospital to view the CCTV footage and positively identified that it was him wandering round the department whilst his father slept.

The child was spoken to alone by the social worker and he indicated that he wanted to live with his grandmother as both his parents were using drugs. Therefore, as a result of the report made by hospital staff the parents signed consent for the child to live with his grandmother and he moved into a significantly safer environment.

**6.2 What do young people say about life in Gateshead in 2015-2016?**

Understanding the “voice of the child” is a key mechanism for LSCBs to determine how effective services are at keeping children and young people safe and where resources should be directed to improve impact and outcomes. We’ve done a lot of work this year, both collectively and as single agencies, to find out how safe our young people feel and understand what is important to them.

We had hoped to hold a large engagement event with children and young people, but we didn’t manage to set this up before the end of the financial year and this will be completed early in 2016-2017. However, following the Ofsted inspection (see section 6.4.5) we commissioned some smaller pieces of work with specific groups of young people to help us understand their views.

Group of young people	Views
<b>School councils and student leadership teams</b>	<p>We met with school councils, student leadership teams or equivalent groups from a number of schools in Gateshead in late 2015-2016 and further sessions were held after the Easter break in early 2016-2017. A detailed report is being prepared for Board members of the findings of the work.</p> <p>On the whole, young people told us that Gateshead is a fairly safe place to live and go to school. Some of them told us that some areas were “rough” and they didn’t like going to certain parks because of older young people and adults drinking alcohol there. Some young people were also aware of areas where people use drugs, either because they’d heard that it happened there or they could smell it on them. There were some schools where young people felt safe on buses but not the Metro and other schools where it was the other way round. Some young people told us that they thought that Gateshead must be a safe place to live as they don’t hear much on the news whereas there’s a lot on the news about bad things happening in other places.</p> <p>Young people told us that it’s important to them for parks to feel safer,</p>

	<p>for buses to feel safer, to hear more about road safety (particularly for cyclists) and fire safety but targeted to older children, to know how to be safer after dark, to know more about what terrorism means for Gateshead and for cyberbullies to be stopped.</p> <p>Almost all of the young people told us that they would know what to do and who to speak to if they didn't feel safe or a friend had a problem. Children from every school apart from one told us that they would speak to someone about a friend, even if the friend told them to keep it a secret, and even if they felt guilty about it, as it would keep them safe. The young people from the other school told us they wouldn't be "a grass" and would sort it out themselves</p>
<b>Young Carers</b>	<p>The bulk of this work was carried out in early 2016-2017, however young people from the group shared that they didn't really feel safe in Gateshead (some because of their neighbours) but they mainly knew what to do if they didn't feel safe at home. They shared worries about the lack of street lighting, stranger danger and road safety</p>
<b>Police Cadets</b>	<p>Overall, these young people said that Gateshead was a safe place to live and they knew what to do if they or a friend didn't feel safe. They shared that the police and local authority should carry out more visits to young people to speak about bullying, cyber bullying and internet safety.</p>

We asked all of our partners as part of the Section 11 audit (see section 6.4.1) whether the voice of the child was used to plan the way that services are delivered and on the whole there was a positive response to this. We also had a discussion at our annual development session on learning from the voice of the child to be more effective. Services for young people's mental and emotional health are currently being redesigned and extensive consultation with young people has taken place through the Expanding Minds Improving Lives (EMIL) project. This included working as "young commissioners" and developing a film of their experiences of mental health services so that professionals can understand their views.

As detailed in section 6.3.1, we held a large conference in Gateshead in October 2015 to raise awareness of CSE. Two groups of young people spoke at the event and received some of the best feedback in the whole programme. The Gateshead Police Cadets told us what they think people need to know about CSE and how they think we should be getting messages to young people. The SCARPA Squad (a group of young people who have previously been involved in CSE or at risk of CSE) also showed us a new film that they've produced using real life stories and told us about how professionals can sometimes get things wrong and how they can make things better, which was really powerful. These presentations highlighted to professionals the terrible impact that CSE can have on a young person's life and gave everyone something to think about in terms of their own practice so that we can improve outcomes in Gateshead in the future.

We've recently started using the MOMO App (Mind Of My Own) in Gateshead and our partners are working hard to promote its use to improve the participation of children and young people in services and make sure their voice is heard. This is an award winning app that helps young people express their views more clearly, get more involved in meetings and make better decisions with their social care team. Ultimately this will help us to keep young people safer. It's too soon for the Board to say in detail about what young people are telling us via MOMO about how safe they feel in Gateshead, but we'll be able to look at that in more depth in the next few months. The early feedback is it's a really easy way to capture



the voice of young people in the child protection system and in care and it was also well received by Ofsted in their recent inspection.

### **6.3 Thematic activity**

#### **6.3.1 Sexual exploitation and missing children**

We are required to report on numbers of children have been missing from care each year and how we are addressing the issue. However, we also think it is important to include children who go missing from home in this too. Children who go missing from home/care are at an increased risk of being sexually exploited and regular missing episodes are a risk indicator that a child is at risk of sexual exploitation or being exploited. The MSET is a well-established sub group of the LSCB which reviews individual young people where there are concerns about going missing and/or CSE and/or trafficking to try to reduce the risks and improve outcomes in a multi-agency way

- There were a total of 928 occasions in 2015-2016 where a young person from Gateshead was reported missing to the police (this includes episodes where a child was in the care of Gateshead Council but placed outside of the borough). The 928 episodes included 657 episodes (71%) where a child was reported missing from care, the remaining 271 episodes related to a child being reported missing from their family home or school.
- The total figure of 928 represents an increase from 2014-2015 where there were 864 episodes. There was also an increase in the number of missing from care episodes from 571 to 657 and an increase in the proportion of episodes from 66% to 71%.
- The missing from care episodes have increased significantly year on year for the past few years. The total number of episodes fluctuates each month, as does the proportion of episodes relating to missing from care. For example, in May 2015 there were 116 episodes in total and in January 2016 there were 54 and in May 2015 there were 80 episodes of missing from care and in March 2016 there were 35.
- The actual number of episodes relate to a smaller number of individual young people as there were a number of young people who were reported missing more than once. In fact, there was a small cohort of young people who were reported missing from care on a very regular basis, often together, some months, and this in part explains the large increase in episodes. It should also be noted that there was an increase in the number of episodes lasting over 24 hours, and a number of episodes which lasted significantly longer. Processes are in place to ensure that there is regular oversight of these cases.

Northumbria Police introduced a new “absent” category on 25 January 2016 and all “missing” reports will now be classed as either missing or absent. For the purposes of MSET, cases will be considered regardless of whether they are missing or absent and return interviews will also be offered regardless of the police category.

MSET discussed 43 cases in 2015-2016, which is a decrease from 53 in 2013-2014. The decrease is due in part to the revised MSET referral form which means that cases are referred more appropriately with tangible risks set out for the pre-meeting. Of the 43 cases discussed in 2015-2016, 23 were discussed on more than one occasion and some on almost a monthly basis due to the level of risk and frequency of missing episodes not decreasing. In

summer 2015 a MSET Escalation Procedure was introduced to ensure senior oversight of those cases where MSET members had significant concerns and there was no observed decrease in the level of risk. We used the procedure on two occasions in 2015-2016 to ensure that the risks around the young people in question were fully understood and assessed and all relevant and appropriate actions had been considered.

Ofsted judged that multi-agency arrangements to safeguard vulnerable children who go missing from home, care or education or are at risk of CSE are robust and, as Board, we are satisfied that they contribute towards improving outcomes for young people. The MSET was found to have an impact by providing additional scrutiny of individual cases and has also led to more effective support for children and young people. Intelligence sharing was viewed as effective in relation to potential hotspots and the work of MSET in terms of disruption activity and use of harbouring/abduction notices was found to lead to a reduced risk for those children.

When children return from being missing they are offered “independent return interviews” to assess any risks and determine whether they were harmed. In 2015-2016 there were 379 return interviews requested and of those there were 228 occasions where the young person agreed to be spoken to (an increase from 192 requests and 106 interviews last year). Ofsted found this process to be holistic and robust and resulting in preventative actions and targeted support. It was noted that not all actions arising from assessments or MSET translate into children’s individual plans and Gateshead Council are taking action to strengthen this.

Cases are now “flagged” within Children’s Social Care where there are CSE concerns to allow for additional management oversight and. At the end of 2015-2016 there were 16 cases flagged as being at risk of CSE and there were a total of 14 children who had their cases flagged throughout the year. The impact of this is that practitioners are more aware of who is at risk and what to look out for in order to keep them safer.

We are very clear in Gateshead that safeguarding is everybody’s business and CSE and missing children is one such area where we have reinforced this. The LSCB works collaboratively with others around this, for example in summer 2015 the LSCB Business Manager and police colleagues delivered mandatory CSE and vulnerability training to 700 taxi drivers licenced by Gateshead Council as part of the conditions on retaining their licence. Anecdotally this has led to increased awareness and reporting of vulnerable young people to Northumbria Police by taxi drivers which is evidence that this work had an almost instant impact in terms of keeping children safer. Through the work of the Licensing Sub Group, the LSCB Business Manager has also supported reviews of premises licences where there were risks to children, for example stores selling alcohol and so-called “legal highs” to children and this was seen as a significant strength by Ofsted in their recent inspection.

Strategic work on CSE and missing children was led by the Strategic CSE and Trafficking Sub Group and the group implemented a new CSE Strategy in May 2015 and had in place a delivery plan which was carefully monitored. Ofsted judged that the strategy was consistent with revised guidance and the delivery plan was robust. In March 2016 the sub group merged with a working group of the Safeguarding Adults Board to form the joint LSCB & SAB Strategic Exploitation Group (SAB) and this group will lead strategically on sexual exploitation in both children and adults, missing children, human trafficking and modern

slavery. It will allow for closer strategic and operational links between the Board and more effective transition for vulnerable young people into adult services.

As detailed earlier in the report, in October 2015 we hosted a very successful sub-regional conference in Gateshead for 500 frontline practitioners and managers. The event was opened by Vera Baird (PCC for Northumbria), chaired by Sir Paul Ennals (chair of a number of LSCBs) and closed by Chief Constable Steve Ashman. We had a number of speakers who were nationally and internationally recognised, such as Zoe Loderick (a highly regarded psychotherapist specialising in sexual trauma and CSE), and also presentations from local young people and Northumbria police on an ongoing local CSE operation. Feedback from the event was incredibly positive due to the quality of the speakers and the information presented. The event was a key way of the Board raising awareness of CSE and providing practitioners with ways to safeguard and support young people at risk of CSE or being exploited. It also provided us with a key opportunity to **lead, challenge** and support **learning**.



### 6.3.2 Child deaths

There is a requirement for LSCBs to monitor and oversee the deaths of children resident in their area. Gateshead shares a Child Death Overview Panel (CDOP) with Sunderland and South Tyneside. An annual report is produced by the South of Tyne and Wearside CDOP to report on trends and issues and is published on our website. We aim to learn from all deaths with “modifiable features” to help improve outcomes for children in the future where possible.

The LSCB was notified of the deaths of nine children from Gateshead in 2015-2016. Of these deaths five were of children with known life limiting conditions. There were four unexpected deaths; however some of those children also had medical issues. To date, no identifiable patterns or safeguarding concerns have been noted within these deaths.

The local picture reflects the national findings that the majority of children who die do so due to life limiting medical conditions or as a result issues linked to prematurity. The number of unexpected deaths as a result of external factors remains small.

### **6.3.3 Private fostering**

Children and young people who live with adults who are not members of their immediate family are “privately fostered”. This is one of a number of areas that we request an annual update on from the relevant partner agency.

In 2015 the Gateshead Council officer with lead responsibility told us that in 2014-2015 Gateshead Council made three new private fostering notifications to the Department for Education with two new arrangements starting. During the reporting year no arrangements ended. As of October 2015 Gateshead had two children subject to private fostering arrangements (both girls aged 15) and since 2012 the local authority has maintained 100% performance in relation to social work visits every six weeks.

Whilst we challenged whether the actual number of cases was in fact higher than reported, we were assured that Gateshead Council and partners are taking appropriate steps to improve reporting and are appropriately protecting those cases where private fostering arrangements are identified. Private fostering literature was refreshed and re-circulated, however this had little impact on referral numbers. Private fostering was also featured and promoted in Council News and the TV screens in council buildings and social media. A specific question on private fostering is also included in the school transfer forms to help identify arrangements. Board members endorsed the report and agreed that best practice regionally and nationally should be considered in relation to promotional activity.

## **6.4 Strategic activity**

### **6.4.1 Section 11 audit**

Section 11 of the Children Act 2004 places a statutory duty on key organisations to make arrangements to ensure that they have regard to the need to safeguard and promote the welfare of children when discharging their functions. We aim to ask our partner agencies to demonstrate their compliance with this on an annual basis via a Section 11 audit.

In 2016 we asked all Board partner agencies, not just statutory partners, and schools (for the first time) to complete the audit and in total there were over 90 responses, which is the highest number we have ever received. Overall, the results were largely very positive and the majority of agencies reported that standards were met and there were no concerns and evidence was provided to support this. More detail on our Section 11 audit is included in Appendix 3 of this report.

### **6.4.2 Learning and improvement activity**

Whilst we haven't published or initiated any Serious Case Reviews (SCRs) in 2015-2016, we have undertaken a number of pieces of work as part of our Learning and Improvement Framework including submitting a Serious Incident Notification (SIN) regarding a teenage girl who was possibly sexually assaulted whilst missing from care. The criteria for a SCR were not met however we were still able to learn some lessons from the case.

A summary of our learning and improvement activity is provided in Appendix 4 of this report.

It is important for us to be able to evidence and understand the impact of our learning and improvement activity. The Baby T SCR (published October 2014) resulted in a number of

changes in practice that were put in place in 2014-2015 and have continued into 2015-2016. These changes will ultimately lead to improved outcomes for children and young people in Gateshead. For example, processes around checks for section 47 enquires were strengthened and ultimately this means that social workers will have access to more detailed information about a family when assessing the level of risk. Awareness raising sessions delivered following the publication of the SCR have also meant that there is a greater level of understanding around bruising in non-mobile babies across agencies.

It is too soon to analyse the impact of the learning and improvement activity of a number of cases listed in Appendix 4 as much of this is ongoing, and other cases have more specific learning rather than that will impact on multi-agency practice. However we are mindful of the need to evidence the impact of our Learning and Improvement Framework and how it leads to improvement in practice and ultimately improves outcomes for children in the borough.

### 6.4.3 Progress against Business Plan priorities

The Gateshead LSCB Business Plan for 2014-2017 sets the strategic direction for the Board and reinforces the specific role of the LSCB to **lead, challenge** and support **learning**. The year 2 (2015-2016) action plan identifies specific actions to deliver the strategic outcomes.

The following tables provide a summary of progress:

LEADERSHIP	
Jointly arrange a sub-regional CSE event	This was arranged and took place in October 2016 – the outcome of this event was a better awareness and understanding of CSE across our agencies
Arrange engagements event with young people	The planned carousel event has not taken place however smaller pieces of engagement work have been carried out. The outcome of this is a better understanding for Board members around how safe young people feel and what is important to them
Consider a Youth LSCB structure	This was not achieved however it is linked to the wider work around engagement and will be carried forward to 2016-2017
Review the BPG arrangements	Achieved and also reviewed by Ofsted
Review the operation of the Board	Achieved and also reviewed by Ofsted
Develop a LSCB Communications strategy	Work undertaken with communications leads around this and more effective proposal developed

CHALLENGE	
Conduct the next LSCB inquiry to explore CSE and the effectiveness of the response in Gateshead	This was conducted, although the final report was delayed and carried forward to 2016-2017
Implement a programme of mini-peer reviews to demonstrate effective multi-agency working	The programme was developed and the first review took place. The outcome of this will be a better understanding of multi-agency working in Gateshead and improved practice where challenges are raised
Contribute to the OSC Review of child protection	Some Board members contributed to the Board. Due to delays outside of the LSCB the final report was not received by the end of 2015-2016 and carried forward in the work plan

“Receive reports and monitoring on a number of additional challenges identified e.g. CP conference chairs’ reports, GP involvement, police involvement, CAMHS, Novel Psychoactive Substances (“legal highs”)	Reports received and challenged by the Board. The outcome of this is a better understanding by Board members of the relevant issue and also improved areas of practice where we made challenges (e.g. GP participation).
--	--

<b>LEARNING</b>	
Receive an annual report on the voice of the child and build on the messages. Where necessary use new technology and the outcome of engagement events	Information submitted to the LSCB Development Day including information on the new MOMO app being used by Gateshead Council to gather the voice of young people
Continue to develop the Learning & Improvement Framework	Reviewed by the sub group and also as part of the Ofsted inspection
Explore ways to bring the voice of frontline staff into the LSCB	Included in the mini-peer reviews and also to be taken forward further in 2016-2017. Will also be considered as part of the effectiveness framework
Implement and embed the findings and recommendations from CQC/Ofsted/HMIC inspections as they arise and cascade the learning	Ongoing throughout the year – a number of partners were inspected and mostly with very positive results

<b>PROTECTING VULNERABLE CHILDREN</b>	
Build on the findings of the Neglect Inquiry by developing and implementing new guidance	New guidance developed, however work is still required to implement it (will carry forward to 2016-2017)
Undertake task & finish work on key areas e.g. high-risk adolescents, care leavers, young people convicted of sex offences" -	Reports received and challenged by the Board. The outcome of this is a better understanding by Board members of the relevant issue and also hopefully improvements in practice where we made challenges
Lead on the local implementation of the national Child Protection -Information Sharing project" -	CP-IS has been subject to national delays but local arrangements are in progress. This will carry forward to 2016-2017. The outcome of this work will be improved information sharing between agencies and this will ultimately impact on children by making them safer as health practitioners will be able to make more informed decisions about risk

<b>PREVENTING HARM</b>	
Review and update the "Thresholds" document	This was delayed within Children’s Social Care, however the existing document was well received by Ofsted
Continue to strengthen links between the LSCB and schools and review the support provided to them	There are now a number of schools represented on the LSBC and links to a number of school-facing partnerships. Work has also been undertaken with school councils and additional training offered to designated teachers. The impact of this is that schools are more aware of the role of the Board and more aware of relevant issues such as CSE which will ultimately help them to keep children safer

Review approaches to extremism, cyber-crime and other forms of exploitation	Reports received and challenged by the Board. The outcome of this is a better understanding by Board members of the relevant issue and also hopefully improvements in practice where we made challenges
Review approaches to other areas of wellbeing in childhood e.g. healthy weight	Work undertaken by Public Health presented to the Board

The action plan for 2016-2017 has been developed and should be read alongside this annual report. Progress against the actions will be reviewed at every meeting of the Board and Business Planning Group.

#### 1.4.5 Ofsted inspection of the LSCB

As previously stated in this report, Gateshead LSCB was subject to a four week inspection in late 2015 alongside the inspection of Gateshead Council under section 15A of the Children Act 2004. The outcome of the inspection was published in March 2016 and Ofsted found that we require improvement to be good.

Inspectors were satisfied that the LSCB fulfils its statutory responsibilities as defined in *Working Together to Safeguard Children (2015)* and there is a clear strong commitment from key statutory agencies. However gaps were noted in membership, activities and monitoring of frontline practice. The report comments that much of the work that the LSCB undertakes it does well and some, very well. During the inspection the lead inspector for the LSCB shared that that the Board was moving towards being good and expressed confidence that steps were being taken to move in this direction. The lead inspector felt that the Board's own self-assessment suggested that improvement was required, but acknowledged that the Board was ambitious and keen to continue to improve and build on previous feedback. It was acknowledged that, although the LSCB requires improvement, the Board is a long way from being inadequate.

Ofsted made seven recommendations to the LSCB, most of which related to areas that we had already identified as part of our ongoing self-assessment:

RECOMMENDATION	
1	Ensure that the LSCB engages more effectively with the community it serves, including learning from the participation and testimony of children and young people, increased engagement with faith and ethnic minority groups, and timely recruitment of lay members
2	Develop appropriate pathways to increase LSCB contribution to and influence on the work of the Health and Wellbeing Board to ensure the experiences of children and young people are given appropriate consideration in all activity
3	Ensure that training is sufficient to meet demand and is informed by a training needs analysis that includes analysis of impact on practice over time and the difference it has made to outcomes for children
4	Ensure that agencies report the outcomes of single-agency auditing activity to the LSCB to increase its oversight of practice
5	Review the multi-agency data set used by the Board to ensure that it meets LSCB priorities and includes all relevant activity that impacts on frontline practice, including workforce information
6	Develop robust mechanisms for measuring the LSCB's effectiveness as part of a performance management framework
7	Ensure that the LSCB annual report provides a clear account of the activity of the LSCB and its strengths and areas for improvement that is easily understood by a lay member

The inspection also noted that attendance at Board meetings is variable, including key decision makers in statutory partner agencies

A number of positive areas were identified by Ofsted:

<p>The LSCB exerts its challenge function appropriately, with some examples of challenge to partners resulting in improved engagement with safeguarding</p>	<p>The LSCB has taken authoritative action to strengthen arrangements for section 11 audits and has introduced a peer review process to further assure the effectiveness of policies and procedures on the ground</p>	<p>Good collaborative working relationships between sub groups have resulted in a whole systems approach to safeguarding, including Child Sexual Exploitation (CSE) and extremism.</p>
<p>The LSCB has a comprehensive and robust business plan and plans are well aligned to other strategic plans such as the Children's Trust and Health and Wellbeing Board</p>	<p>The Board's auditing activity is used to improve practice</p>	<p>The sub groups are appropriately aligned to the LSCB's statutory responsibilities and priorities</p>
<p>The LSCB has a comprehensive local learning and improvement framework and proactive work was demonstrated following the most recent Serious Case Review</p>	<p>Work around CSE is strong and robust. There is collaborative working and a holistic, whole systems approach to CSE including a robust delivery plan and training sessions with 2,500 young people and 700 taxi drivers.</p>	<p>The LSCB ensures that policies and procedures are updated regularly with clear links to detailed guidance</p>
<p>A proactive approach was taken to raising awareness on Female Genital Mutilation</p>	<p>The LSCB can evidence clear improvements in practice as a result of some training, for example work with GPs</p>	<p>LSCB members express confidence in the Independent Chair, who is highly skilled and knowledgeable. The chair is supported by an experienced LSCB Business Manager who is pivotal to the smooth functioning of the LSCB</p>

Two key pieces of work undertaken by the LSCB Business Manager (the sub regional CSE conference and work around licensing) were also identified as good practice by Ofsted in their overarching report.

Following receipt of the draft report, an Ofsted improvement plan was put in place and this is regularly monitored by the Business Planning Group, the full Board and other groups such as Gateshead Council Care Wellbeing and Learning Group Management Team. Progress is being made in all areas and a number of the recommendations were achieved by the end of 2015-2016. The remaining actions will be completed in early 2016-2017.



Three lay members have now been recruited (jointly with the SAB)

Work is being progressed with the Diversity Forum to identify further community representation

A representative from the Jewish community has been identified to strengthen links between the Board and Jewish schools

A formal pathway has been developed between the LSCB and HWB to increase contribution and influence

Single agency auditing has now been built into our workplan to strengthen oversight of frontline practice

National best practice has been explored to develop a performance and effectiveness framework for the LSCB

National best practice has been explored and used to review and strengthen the LSCB dataset

## 6.5 Data and performance information

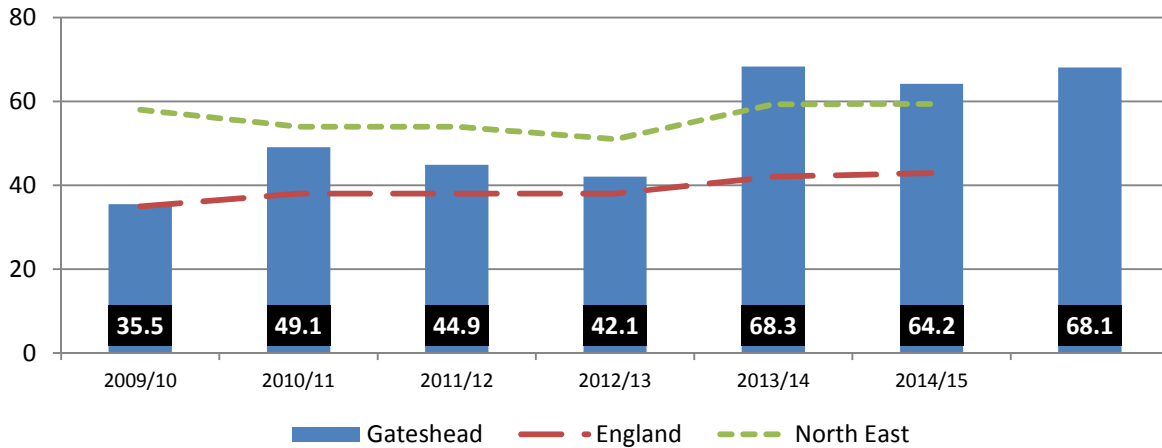
Key performance indicators relating to safeguarding, child protection and early help are monitored by the LSCB Performance Management Sub Group and reported to the Board on a quarterly basis. This enables us to challenge appropriately and satisfy ourselves in relation to the effectiveness of services being delivered in the borough to support children and young people and ensure their safety and wellbeing. In addition, our partner agencies individually monitor their performance indicators and information relating to the welfare of children in Gateshead.

There were 394 Initial Child Protection Conferences (ICPCs) held in 2015-2016 of which 338 (85.7%) resulted in the child being made subject to a CP plan. This indicates that the right cases are going to ICPC and that there is multi-agency agreement on the best way to progress these cases.

The numbers of children becoming the subject of CP plans increased during the year and at the year-end there were 273 children subject to a plan. This represents 68.1 children per 10,000 of the population and therefore we remain higher than the national average (42.9 per 10k), the regional average (59.5 per 10k) and our statistical neighbour average rate (57 per 10k) based on the 2014-2015 CIN Census figures.

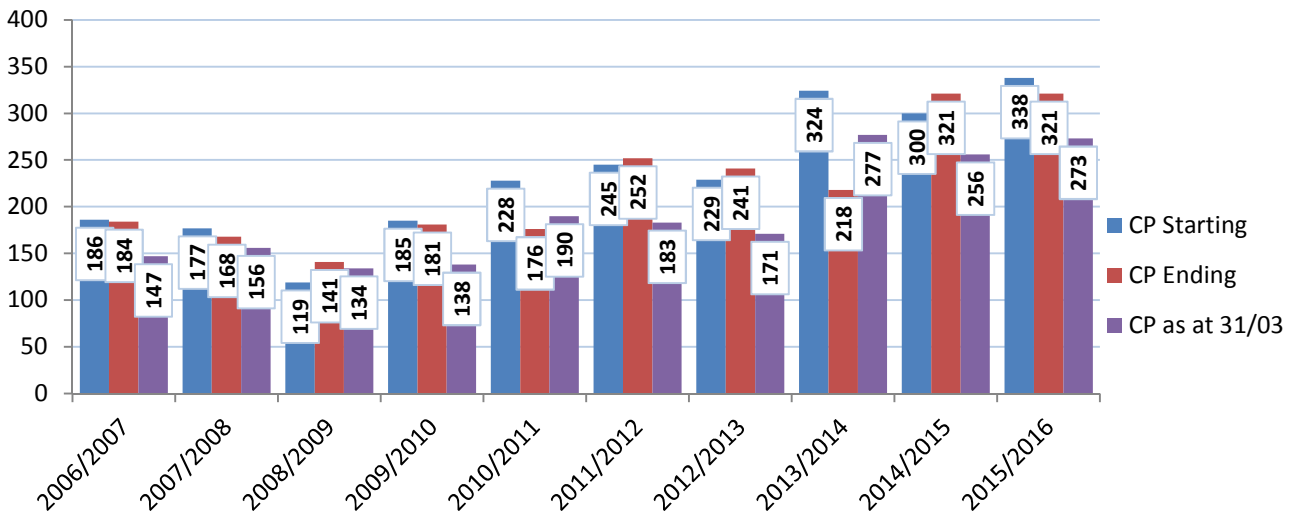
The following graph tracks the changes in our CP plan figures over the past few years and compares them to national and regional averages.

**Child Protection Plan numbers per 10,000 at year end**



The graph below provides additional trend information in relation to CP plans started, ended and opened as at 31 March 2016. There have been significant rises in child protection numbers over the last 3 years, with this year seeing the largest number of children requiring statutory protection arrangements in 10 years. This increase corresponds with improved practices within Children’s Social Care. As a Board we keep a watching brief on the figures and we are reassured that the children who are subject to CP plans have been made so appropriately.

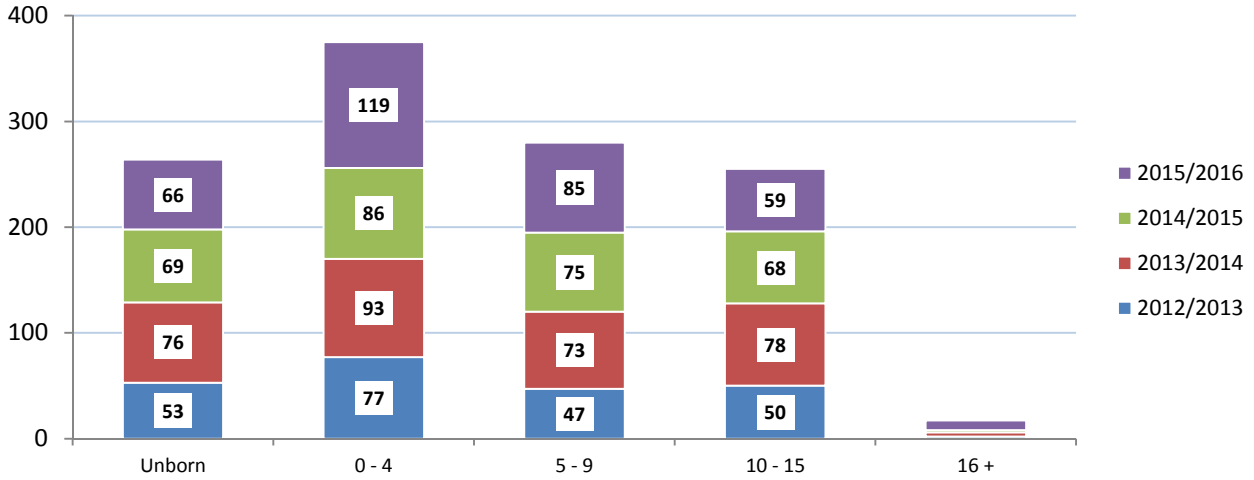
**Child Protection Numbers**



The following graph shows the significant increase in the proportion of children under the age of 5 who have become subject to a CP plan this year compared with previous years. This is in line with Gateshead’s priority of intervening as early as possible in a child’s life in order to affect positive change. We continue to have high numbers of unborn children subject to CP plans in Gateshead, with 66 in 2015-2016 (20% of the total). This approach was endorsed by Ofsted who initially queried why these figures were amongst the highest in the country but concluded “*this proactive approach ensures that focused multi-agency work*

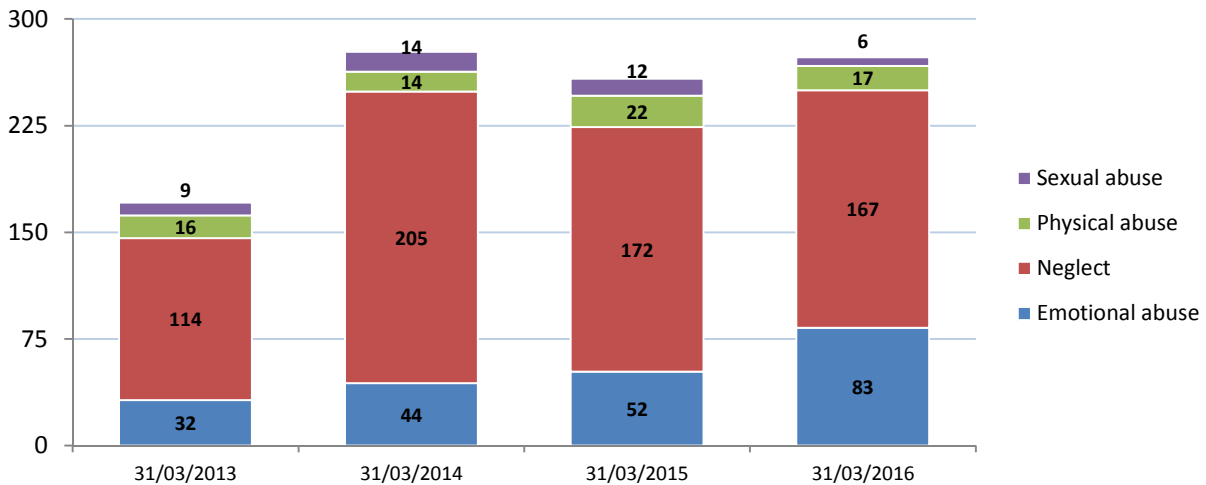
*starts as soon as professionals identify concerns. Protective action commences and continues before and immediately after birth”.*

**Age of Children when placed on a Child Protection Plan**



We continue to see that neglect remains the most common reason for a child in Gateshead being made subject to a CP plan. At year end 61.9% of all CP plans were under the category of neglect, which is a slight decrease from the end of the previous year when 66.7% of plans were due to neglect. We have also seen some movement in the category of emotional abuse, with an increase from 20.2% of plans at March 2015 to 29.7% of plans at March 2016.

**Child Protection Category at Year End**

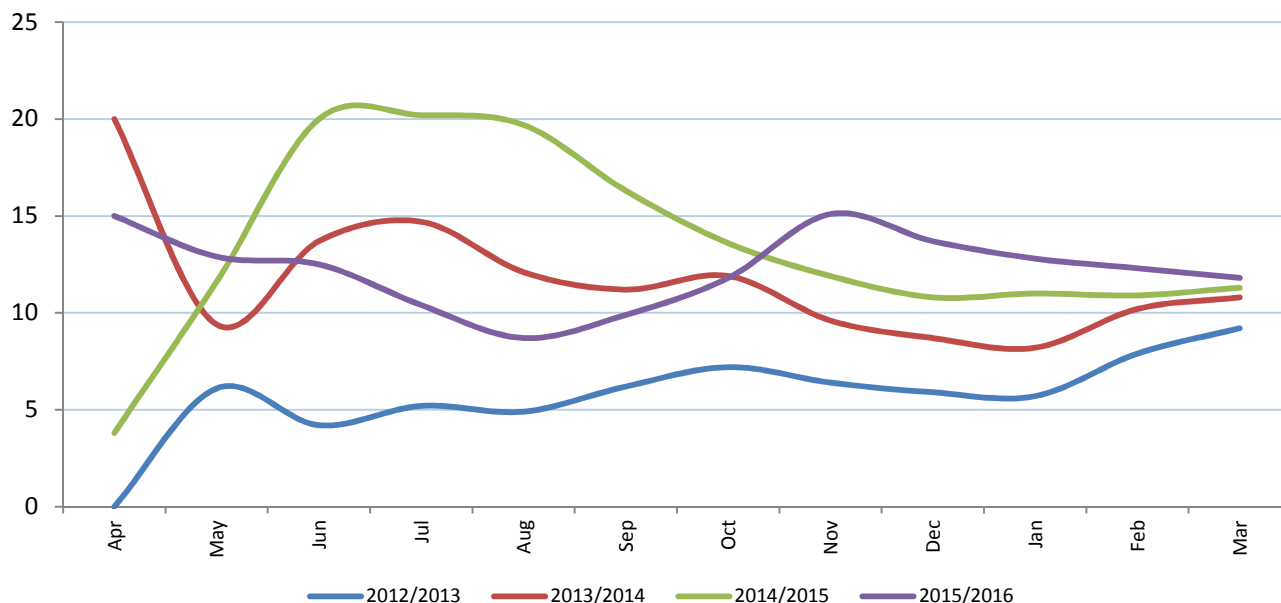


Our social workers visit children who are subject to a CP plan regularly and the service aims to ensure that children are seen at least every 3 weeks, the impact of this is that decisions about a case are made based on current risks and issues. At the end of 2015-2016 there were 273 children subject to a CP plan and of this cohort (excluding unborn babies) 222 had their latest child protection visit held within 3 weeks (87%).

During 2015-2016, 338 children were made subject to CP plans and 40 of them (11.8%) were subject to a CP plan for a second or subsequent time. Six of these children were

subject to a second or subsequent plan within 2 years of their previous plan ending. This is a very slight increase from last year when 34 of 300 (11.4%) children became subject to a CP plan for a second or subsequent time, but compares favourably with national (16.6%), regional (14%) and statistical neighbours (15.7%), based on data from the 2014-2015 CIN Census. Again, these low numbers suggest that there are robust practices in Gateshead and appropriate levels of support.

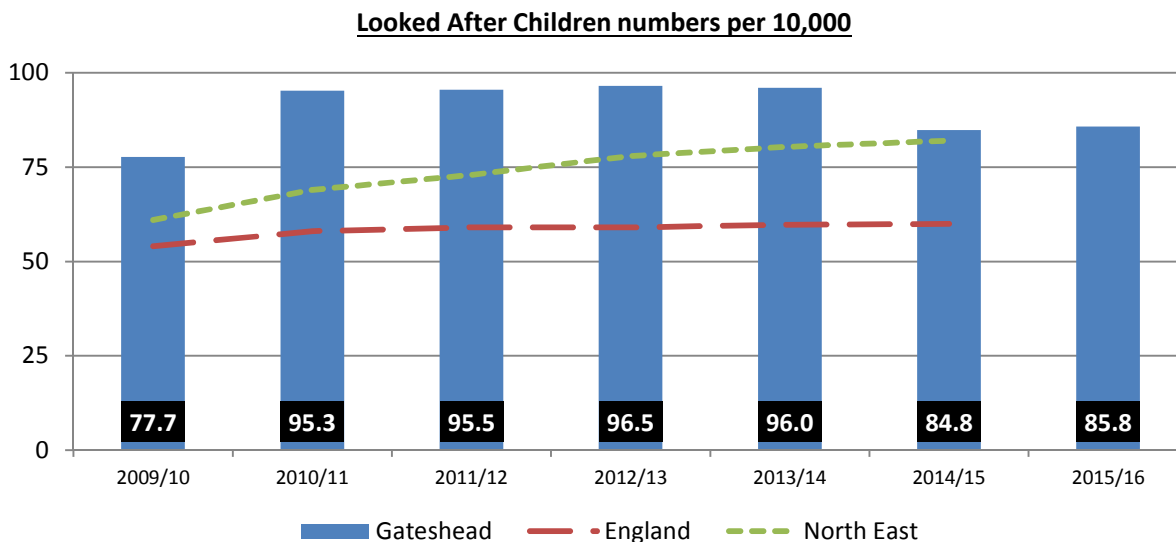
**Performance Indicator: % children becoming the subject of Child Protection Plan for a second or subsequent time**



Gateshead Council's Referral & Assessment Team received 8,943 "contacts" in 2015-2016, which includes contacts made by statutory partner agencies such as the police, health and education, as well as from members of the public. Of these 8,943 contacts, 2,080 progressed to referrals and 1,937 resulted in comprehensive Child In Need (CIN) assessments. This shows an 18.7% in referrals, although re-referrals remain low at 12.7%. This is lower than our re-referral rate in the previous year (16.2%) and also the England (24%) and North East (22.3%) averages. This suggests that a greater proportion of children and young people who require support are receiving this in a timely way once they come to the attention of Children's Social Care and ultimately this leads to improved outcomes for families.

There were a total of 2,191 CIN assessments completed in 2015-2016 and this includes a number which were not carried out as the result of a referral but were part of ongoing work with a family. 92.9% of CIN assessments (2,031) were completed within required timescales and this continues to represent strong performance in this area. This represents a 9.9% increase on the previous year when there were 1,993 CIN assessments completed and 1,946 (97.6%) within 45 working days. Regionally, 84.9% of CIN assessments are completed within 45 days and nationally this figure stands at 81.5%. Our statistical neighbours average at 80.9% (based on the 2014-2015 CIN Census) and therefore our performance is significantly higher indicates that our families in need are receiving timely support and intervention.

On 31 March 2016 there were 344 children who were looked after by Gateshead Council and this represents 85.8 per 10,000 of our population and is similar to the previous year (340 children, 84.8 per 10k). We continue to have higher numbers of Looked After Children compared with the regional rate of 82 per 10k and our statistical neighbours' rate of 83.3 per 10k. Our figures are also significantly higher than the national rate of 60 per 10k (based on SSSA903 reports for 2014-2015).



In terms of earlier intervention work, in the last 12 months we have seen a significant rise in the number of new Common Assessments being undertaken, rising from 494 in the previous year to 988 in 2015-2016. There are currently 1165 active Teams around the Family (TAFs), which provides a more accurate representation of the multi-agency work being carried out in Gateshead. These figures represent an increase in the number of families being supported through our multi-agency approach to early intervention. The CAF/TAF approach has been increasingly impacted on by our approach through the FamiliesGateshead programme (our local version of the Troubled Families programme). A total of 1054 families have been allocated and have started their intervention under phase 2 of the programme.

During 2015-2016 Northumbria Police recorded 4,476 incidents of domestic abuse in Gateshead and 1,948 of these incidents involved children, which is an increase of 91 incidents from the previous year. 1,122 of the incidents involved repeat victims and 1,156 of the victims were classed as high or medium risk at the point of the initial assessment. 76.7% of victims of recorded domestic abuse in Gateshead in 2015-2016 were female.

Operation Encompass is a police-led initiative established to share information with schools in order to support children following a domestic abuse incident. There were 529 separate domestic abuse incidents report from April 2015 to 4 January 2016 of which a total of 1185 children of school age were involved. The average age of the child involved was 9 years and 172 incidents were open or opened to Children's Social Care, of which 132 repeat incidents were recorded. There were 58 incidents which were both repeat incidents and open to Children's Social Care and 73% of incidents involved households where two children reside.

Further follow-up support is also in place for the young people affected and information is fed into TAF meetings. Issues are discussed with the child, where appropriate and more covert actions such as monitoring behaviour, attendance and wellbeing are carried out. 100% of schools in Gateshead are now signed up to Operation Encompass and the success of the initiative has been recognised. Northumbria Police are now looking to roll the model out to other local authority areas in the region. This initiative is an excellent example of the impact that multi-agency work can have on young people as it has led to improved information sharing and improved support for young people where domestic abuse is an issue at home. Previously schools may not have been aware of the incidents and therefore not have been as alert to changes in behaviour or presentation or able to proactively support these young people.

Data in relation to Youth Justice services in Gateshead continues to be positive. The most recent data (October 2014-September 2015) for first time entrants (FTEs) into the system shows a total of 47 FTEs, which is a rate of 276 per 100,000 of 10-17 year olds and is within target. This also shows a reduction in FTEs and this continued reduction is being achieved through the development and expansion of the current YOT Prevention Programme, work with schools, the new Child to Adult Violence programme and also work on pre-pubescent sexualised behaviour that had been identified as a trend in current caseloads. The YOT continues to identify children and young people on the cusp of offending or involved in anti-social behaviour.

The latest hospital data available for “alcohol specific admissions” for under 18s covers the period of 2012-2013 to 2014-2015 and at 54.7 per 100,000 this is a 6.97% reduction from the previous reporting period of 58.8 per 100k. The admission rate has continued on a downward trend over the past four periods of data collection; despite this we still have significantly higher rates than the England rate of 36.6 per 100k. However, in the North East region we have the 4<sup>th</sup> lowest admission rate and slightly less than the regional average of 60.4 per 100k. The highest admission rate in the North East is Sunderland at 92.9 per 100k, which is also the highest rate in England.

The most recent teenage pregnancy data is available up until the end of 2014 and shows 37.7 under 18 conceptions per 1,000. This data shows a 18.4% increase from the rate in 2013 of 29.3 per 1,000. In real terms this means that from 2013-2014 there was increase 16 under 18 conceptions from 103 in 2013 to 119 in 2014. Our teenage pregnancy rate is now the second highest of the five Tyne and Wear authorities with the lowest being North Tyneside at 22.9 and the highest being Sunderland at 35.3 per 1,000. We are also higher than the overall England rate of 22.8 conceptions per 1,000. The current rate of under 18 conceptions is at the highest level over the last four periods of data collection and this follows a time in 2013 when it was at its lowest since the availability of the data. The data continues to be monitored by our partners who are working together to develop a Sexual Health Strategy to reflect the joint vision for Gateshead in improving sexual health outcomes.

## APPENDIX 1 – Our meetings

Meeting	Key agenda items					
<b>May 2015</b>	LSCB Budget	Prevent Duty	Police MFH Co-ordinators	LSCB Business Plan 2015-2016		
<b>July 2015</b>	LADO report	IRO annual report	SCU annual safeguarding report	Children's Trust Board annual report		
	Families Gateshead Annual Report	SAB Annual Report & Annual Plan	Community Safety Plan	British Transport Police & safeguarding		
	CP-IS	OSC review of child protection	MSET escalation process	"The Dark Web"		
<b>September 2015</b>	Foetal Alcohol Spectrum Disorder and safeguarding implications	Update on the role of GPs in safeguarding	Cedars Pre-Departure Facility and an overview of the Home Office Returns Process	Savile Inquiry action plan		
	Outcome of OSC review of domestic abuse	Revised Neglect Guidance	GP attendance at CP conferences	Update on CSE Inquiry		
<b>November 2015</b>	Operation Encompass	CQC inspection update	Report on performance issues with CP conference chairs' reports	Private Fostering annual report		
	STFT – revision of safeguarding structures	Mini peer reviews – process and first review	Gateshead Council Budget Consultation	Introduction of the "absent" category		
<b>January 2016</b>	CDOP annual report 2014-2015	MAPPA annual report	Elective Home Education Strategy	Business Plan Focus Area – Counter Terrorism and Preventing Extremism		
	Business Plan Focus Area – Care leavers	Findings of CQC inspection of STFT	Evidence of positive outcomes and learning between GPs and children and families	Initial findings of the Ofsted inspection of Gateshead Council and LSCB		
<b>March 2016</b>	Children Missing Education annual report	Gateshead GP report project	Gateshead College – Journey to outstanding	Business Plan Focus Area – homelessness		
	Business Plan Focus Area – cyber crime	Business Plan Focus Area – Wellbeing in childhood, healthy weight and healthy schools	Business Plan Focus Area – High risk adolescents (permanent exclusions)	Business Plan Focus Area – NPS ("legal highs")		

**APPENDIX 2 – Partner agency progress in 2015-2016**

Key operational developments
NTW now has process in place with Children's Social Care to has enabled health care records to be updated in "real time" with details of CP plans ensuring any clinicians working with the family are aware of these concerns
Housing Services/The Gateshead Housing Company provide proactive support via the Care Leavers' Accommodation Support Panel. The aim of this work is increase opportunities to succeed. Further work is being done to support young offenders to safeguard and meet their needs
NTW Safeguarding and Public Protection policies have been externally audited and have been given assurance that they are fit for purpose. Senior Managers have received training on learning lessons from Savile and ensured and actions required from recommendations for NHS trusts are completed.
NHS Newcastle Gateshead CCG Safeguarding Team secured funding for a pilot in 2015-2016 to improve GP involvement in the child protection process, particularly CP conferences. The pilot involved seven practices and was a great success and the response rate for GP reports to CP conferences increased from 24% to 71%. There are now plans to roll this work out to more practices
GHNFT has now a Designated Doctor who will start in April 2016. The Named Midwife has also been allocated specific time to undertake safeguarding work. The Trust also appointed another safeguarding administrator to support safeguarding work in Maternity Services generated by the high numbers of unborn babies subject to CP plans. This is evidence of the Trust's commitment to ensuring there are sufficient resources available to the Safeguarding Team to provide a robust service.
Gateshead received 53 Syrian refugees in 2015, 17 of which were children/young people of school age and a further 60 individuals (21 children) will be received in May 2016. Prior to the refugees arriving significant joint work was undertaken to ensure that appropriate arrangements were made and support was in place. The first cohort of children are now attending education and are settling in well, one child (age 13) had never been to school until he moved to Gateshead so the impact of this collaborative work on his life will be huge
The Complex Pupils Meeting is a multi-agency meeting to ensure that managers across agencies are aware of some of our most vulnerable young people who are not accessing full time education and ensure that services are joined up to support them moving towards full time provision. The meetings provide a coordinated approach and recognise that a holistic approach is needed to meet the needs of our most vulnerable children and young people

Progress in relation to the LSCB's priorities:

LEADERSHIP		
Two College staff members requested and received permission from the Home Office to deliver Wrap3 training to other staff	Within the local authority a Service Director and Service Manager commissioned a management review to examine issues of underachieving performance and develop solutions	The LA Performance Clinic is a forum for managers to understand data, performance and QA systems. The information shared is used by managers to ensure that they lead teams effectively and ensure that children are safeguarded
One health partner made the decision to provide CSE training to all staff in the service over a 12 month period	The Practice Advisory Group play a role in supporting practice improvement and professional development	The service has ensured that training available to the childcare sector is updated to reflect the role of LADO and Prevent
CCG safeguarding staff led the comprehensive action plan and recommendations following the recent CQC inspection – 95% of the actions have been completed	Review of the Safeguarding Service undertaken by one health partner and led to a change of roles and responsibilities to enable a more focused approach	Health partners were involved in an investigation relating to Jimmy Savile which required strong leadership and close working with DoH, police and witnesses



LA managers at all levels were recognised by Ofsted to be good leaders and worked well with partner agencies, especially with police re CSE	Within social care and education a Complex Pupils multi-agency meeting was developed to improve engagement of complex pupils in education	Development of a multi-agency forum in relation to electively home educated children has led to improved discussion around their needs
---	---	--

CHALLENGE		
A practice development tool has been introduced to improve risk assessment and management. Cases are assessed using the tool and any issues are challenged with practitioners and their managers. This is a means of reflective discussion around judgement and risk	The Performance and QA Framework has been used to improve outcomes for children as performance information was used more effectively to highlight evidence of issues internally and within partner agencies and challenge them	Internal challenge of practice takes place on a daily basis, however a specific example is the review of a case within the service which was presented to the LSCB Learning & Improvement Sub Group and a subsequent review and challenge of practice
The Safeguarding and Public Protection Team routinely challenge operational services within the organisation in respect of attending ICPCs and providing reports	Delivered Counter Extremism tutorials to students aged 16-19 years and challenged their conceptions of radicalisation and extremism	The Safeguarding Policy has been revised and inspectors support schools by reviewing safeguarding arrangements, There has been a change in remit to increase the focus onto the most vulnerable groups of children and young people
Designated staff have challenged the contractual arrangements for safeguarding children to ensure that they are robust	Managers and practitioners regularly challenge other agencies at the MSET	Challenge to staff is evident in a supervision audit and an action plan is in place to improve safeguarding supervision
Named professionals have challenged professionals within adult-facing departments to consider the needs of children in the family when an adult attends with a high risk presentation	Managers within the service have challenged the management of a case by Children's Social Care and escalated issues that were not dealt with initially	Concerns of Trust staff were escalated to managers within another local authority (also covered by the Trust) and a different course of action was then taken

LEARNING		
A recent management review enabled the unit to ensure effectiveness and learn from performance information to ensure statutory requirements are met	Issues raised from a complaint about removing children from their parents in an emergency has led to a change in practice and information provided to parents	The CSE training provided has increased the number of safeguarding concerns raised about children who may be being exploited
Audits of casework demonstrated that the voice of the child was not reflected in recording of support plans etc. This has been addressed in staff team training and via individual supervision	The staff attended the LSCB CSE conference and applied the knowledge to their work. They have also attended other training events e.g. Prevent, DV, SCRs etc. and applied the learning to practice	The learning from SCRs locally and nationally has been implemented and led to improved systems and processes. Best practice has also been shared following CQC inspection of other agencies
There have been several training sessions delivered internally regarding FGM and, as a result, the number of	Learning is demonstrated through supervision and training. The incident reporting system is monitored to	All staff have been trained on "Promoting British Values and Equality & Diversity" to meet the requirements of the Prevent

reported cases has increased considerably	understand safeguarding issues and challenges to frontline staff and this is used to inform training and policy work	Duty
---	--	------

### Inspections

Gateshead Council Children's Social Care was inspected by Ofsted in 2015-2016 and services were judged to be "good". This is a key indicator of the effectiveness of safeguarding services in the borough. Ofsted found that "children are at the heart of good practice" in Gateshead. Leaders, managers and workers were judged to be highly effective and very good practice was seen across a number of areas. Children, young people and their families were found to be receiving the right support at the right time and children in need of protection are identified early. Ofsted judged that there is a highly effective multi-agency approach to safeguarding and managing risk across the council and wider partnership and found the response to CSE and missing children particularly strong. Social workers were found to be effectively supervised and therefore able to complete good quality assessments. It was noted, however that plans are not consistently outcome focussed and progress is not always monitored/measured, therefore work is underway to improve this area

In May 2015, STFT received an unannounced CQC inspection of hospital and community services and safeguarding children was identified by inspectors as having good partnership working arrangements, policies and supervision in place to support staff. Inspectors specifically commented upon the joined up working between health visitors and GPs and staff access to the Safeguarding Team. A paper was taken to the LSCB in January 2016

Nine GP practices in Gateshead were inspected by the CCG and eight were rated as "good" for the care of families, children and young people. One practice was rated as "outstanding". Appropriate systems were in place all practices to identify children at risk and immunisation rates were in line with local average. Good examples of joint working with midwives and health visitors. The practice rated as outstanding was seen to have particularly strong relationships with other professionals and also had robust arrangements such as regular safeguarding meetings and a vulnerable child protocol. All of the practices were rated as "good" for the care of vulnerable patients. Practice staff demonstrated that they could recognise signs of abuse in vulnerable adults and children and were aware of their responsibilities and how to raise concerns.

GHNFT was inspected by the CQC in September 2015. The overall rating of the hospital was "good" with services for children and young people also being rated as "good" and maternity and gynaecology services being rated as "outstanding". In terms of providing a safe service the Trust was rated as "good" and rated as "outstanding" for providing a caring service. Inspectors noted that staff within the Emergency and Children's Departments knew how to escalate safeguarding concerns, were able to access appropriate guidance and understood their roles and responsibilities. As a result of robust safeguarding training staff were found to be able to recognise risk factors of FGM and CSE and processes were in place to support inter-agency work and information sharing.

There were two inspections of Northumbria Police by HMIC in 2015-2016. One inspection focussed on vulnerability and the force was judged to be "good". Positive partnership working was identified, particularly around domestic abuse and missing children. The inspection found that the force provides a good response to children who go missing and is well prepared to tackle CSE. The other inspection focused on honour based violence (HBV), FGM and forced marriage and Northumbria was one of only three forces nationally to receive a positive inspection in this area. Northumbria Police is prepared across all areas to protect people from harm from HBV. The force annual assessment for effectiveness found that Northumbria Police is good at keeping people safe. The force was judged to be good in terms of being effective and efficient at keeping people safe and to require improvement in terms of how legitimate the force is at keeping people safe and reducing crime

There have been relatively few Ofsted inspections of schools in the past academic year in Gateshead. Four primary schools were inspected and three were judged to be good or outstanding. Two secondary academies were inspected and received "requires improvement" grades for their overall effectiveness.

It should be noted that all three schools judged by Ofsted to require improvement overall received "good" judgements for the personal development, welfare and behaviour aspect of their work. In addition, all schools were judged by inspectors to have effective safeguarding practices.

## **APPENDIX 3 – Section 11 audit**

### **Section 11 audit**

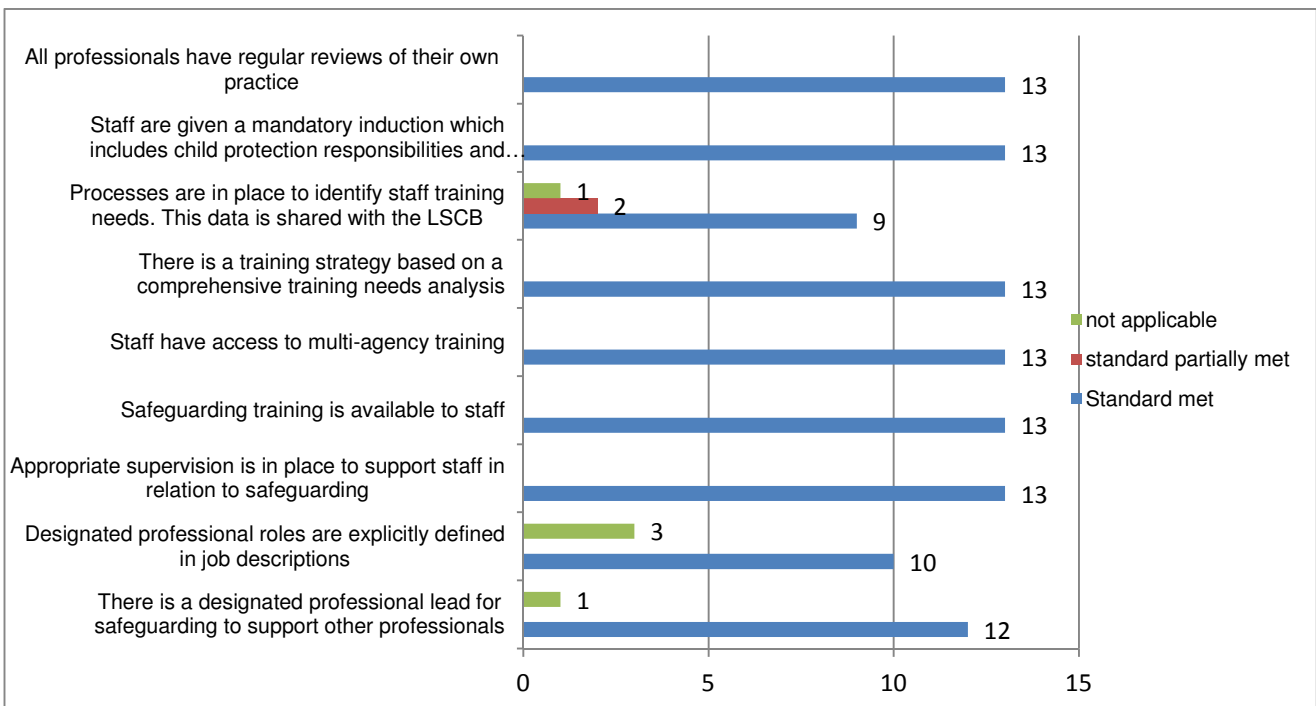
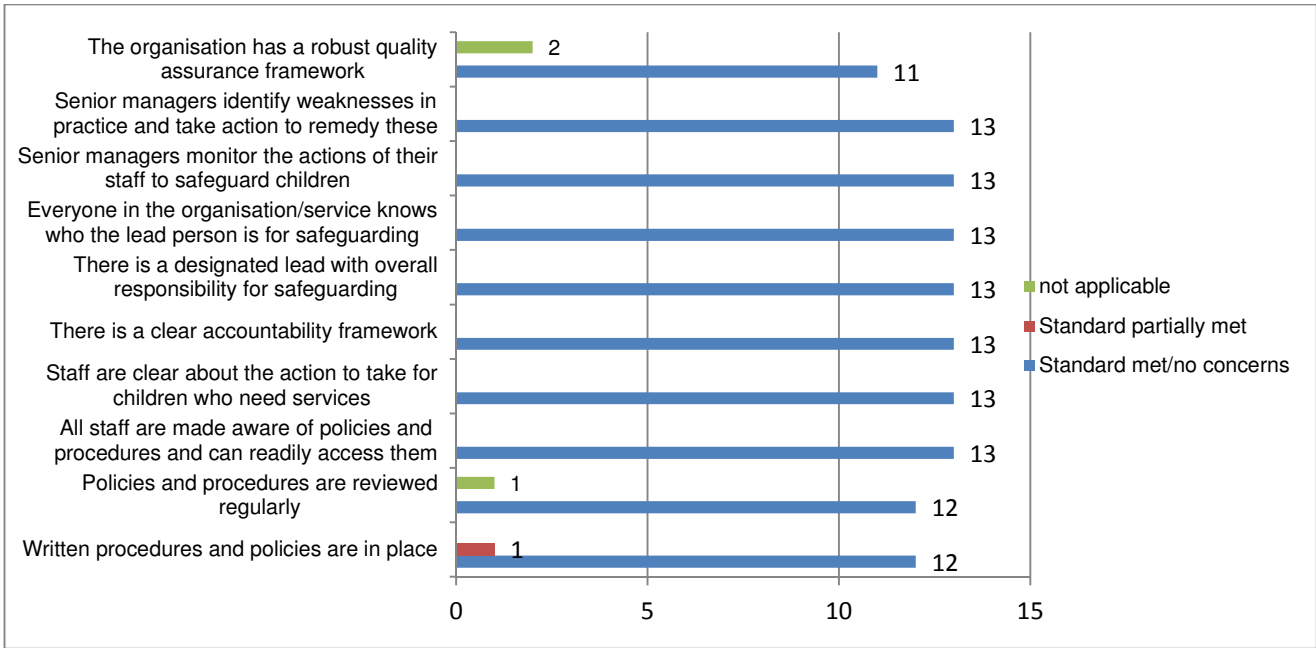
Section 11 of the Children Act 2004 places a statutory duty on key organisations to make arrangements to ensure that they have regard to the need to safeguard and promote the welfare of children when discharging their functions. We aim to ask our partner agencies to demonstrate their compliance with this on an annual basis via a Section 11 audit. In 2016 we asked all Board partner agencies, not just statutory partners, and schools (for the first time) to complete a proforma to demonstrate that they have appropriate arrangements in place including:

- lines of accountability
- management commitment
- consultation with children and young people
- whistleblowing
- supporting professionals working with children
- safe recruitment
- allegations management

Respondents were asked to state whether each standard was met, partially met, not met or not applicable and provide evidence of their compliance or steps that will be taken to improve this.

In total, there were over 90 responses for the 2016 Section 11 audit, which is the highest number we have ever received (as stated above, this is the first year that schools have contributed and this explains the significant increase in responses). All statutory partners submitted a response to the audit, as did a number of partners not considered statutory under section 11. No response was received from UK Visas and Immigration and Cafcass submitted a generic national response which could not be compared with the responses of other agencies. Board members were satisfied that further action was not necessary in relation to either agency as they are not statutory for the purposes of the Section 11 audit, although it would have been good practice to have responses from all partners.

The findings of the audit were shared with Board members as part of the Board development session and the responses from Board partner agencies were analysed in more depth. Overall, the results were largely very positive and the majority of agencies reported that standards were met and there were no concerns. A number of respondents also provided evidence to support this and the remainder were challenged and have since submitted evidence. There were some questions where there were a higher proportion of positive responses than others, for example 92% of Board partners have whistleblowing arrangements in place but only 70% reported that children and young people are listened to and their wishes and feelings are taken into account when developing services. The full results have been presented to Board members via a report and a summary of some areas is provided below:



A detailed analysis of all responses, including schools, was not carried out to the same level of detail as those responses solely from partner agencies due to the sheer numbers involved. As with some partner agencies, some schools submitted responses to indicate that standards were met but did not provide evidence of this and were therefore challenged to provide this and a number of them have done so. There were only six schools in Gateshead who did not respond (five primary schools and one special school). The vast majority of respondents reported that standards were met or partially met which told us that overall LSCB partner agencies and schools in Gateshead have effective arrangements in place to keep children and young people safe and are doing what they are supposed to do. Some schools reported issues which have since been followed up, for example one school reported that they needed additional support from the LADO and therefore the LADO was challenged and asked to contact the school in question.

**APPENDIX 4 – Learning & Improvement activity**

Case	Details of activity in 2015-2016
<b>Baby T SCR</b>	The Baby T SCR was published in October 2014 and work continued in early 2015-2016 to ensure that all actions were signed off.
<b>Case A</b>	<p>The Learning &amp; Improvement Sub Group received a request from the Designated Doctor for Child Death Reviews to discuss this case as one of the children, an 11 week old baby, died from a suspected “cot death” in late 2014-2015. There were no suspicious circumstances; however there had been previous concerns about the baby’s siblings and it was felt that a scoping exercise and more detailed discussion would be beneficial prior to the case being discussed at the Child Death Review Sub Group.</p> <p>Sub group members were satisfied that the baby’s death was not linked to any issues in the home or the family circumstances, however it was noted that further discussions were required to ensure that the mother had appropriate support in relation to bereavement and her older children. It was also noted that school had made a referral to Children’s Social Care regarding the older children, however the details and intention of the referral were not clear and therefore actions were set to strengthen this.</p>
<b>Case B</b>	<p>We submitted a Serious Incident Notification (SIN) to Ofsted, DfE and the National Panel of Experts in June 2015 when this particular young person made a possible allegation of sexual assault whilst she was missing from care. We reviewed the case and found that it did not meet the criteria for a Serious Case Review, and the National Panel agreed with this.</p> <p>This was a complex case with a number of issues including learning disabilities, sexual abuse and underage sexual activity in the young person’s life and also throughout the wider family. The sub group concluded that the young person had not suffered “serious harm” on this occasion and agencies had done their best to safeguard her, however actions were set in relation to working with parents with learning disabilities and Section 20 arrangements. These actions continue to be monitored by the sub group.</p>
<b>Case C</b>	<p>The Learning &amp; Improvement Sub Group received a request to review this case from the Named Doctor at GHNFT to determine if there was any additional learning from this case. The family were non-British nationals and all three children have developmental difficulties and have had periods being subject to child protection plans and being looked after under Section 20. The youngest child sustained possible non-accidental injuries (bruising) whilst in the care of his parents. Following this incident all three children were removed from the family home and care proceedings were issued. Whilst sub group members were happy that the criteria for a SIN notification or a SCR were not met, it was felt that there was some learning in the case.</p> <p>The sub group noted that there were a number of different social workers and health visitors involved in this case and this could have led to inconsistencies. It was also noted that there should have been a tighter framework around legal meetings and tighter decision making processes. It was also noted that there were occasions where a child was noted to have injuries at school but these were not reported until later and work has been undertaken around this. The sub group found that there were no clear processes in place for professionals to escalate multi-agency challenge and therefore this is being progressed further</p>
<b>Case D</b>	<p>The Learning &amp; Improvement Sub Group received a request to review this case from the Named Doctor at GHNFT when one of the children in the family died from medical issues (she had multiple health problems linked to disabilities). Members of the sub group were asked to complete a scoping exercise about the case; however the detailed discussion has been delayed due to an ongoing police investigation. The case will now be reviewed in July 2016 and there is no current evidence that the death was linked to abuse or neglect, however there may still be some learning for agencies</p>

**Case E**

This case relates to an episode of self-harm by a young person who was subject to a child protection plan. Whilst sub group members were satisfied that this was not a “notifiable incident” we felt that further exploration of the case was required to determine whether there was any additional learning. We decided to use a new methodology known as Critical Incident Collaborative Inquiry (CICI) to learn from those practitioners working directly with the young person to understand what happened. A learning event was held late in March 2016 and a report is currently being prepared for the LSCB.

The learning event told us that this was a complex case with issues around domestic abuse, sexualised behaviour, mental health issues and substance misuse. It was agreed that a high level meeting was required to ensure that appropriate services were in place to keep the young person safe and also wider pieces of work were required to strengthen the response to those young people who are vulnerable but also very difficult to manage due to their own behaviour

## APPENDIX 5 – Sub group updates

### Child Death Review Sub Group (CDRG). Chair – Public Health Consultant (Pam Lee in 2015-2016)

#### Purpose of the sub group

The purpose of the CDRG is to undertake multi-disciplinary reviews of the deaths of all children who were resident in Gateshead at the time of their death to better understand how and why children die. These findings are used to take action to prevent other deaths, where relevant/appropriate and improve the health and safety of Gateshead's children.

The sub group's remit is determined by the statutory functions of Gateshead LSCB as set out in Regulation 6 of the Local Safeguarding Children Boards Regulations 2006, made under section 14(2) of the Children Act 2004 and Chapter 5 of *Working Together to Safeguard Children* (2015).

The work of the CDRG feeds into the South of Tyne and Wearside Child Death Overview Panel (CDOP) via the chair and Child Death Review Co-ordinator.

The group collects and collates an agreed minimum data set of information on all child deaths in Gateshead. This data set reflects the national requirements from the DfE and is consistent with the data sets for the two other LSCBs represented on CDOP.

#### Progress in 2015-2016

During 2015-2016 the group held a development session to assess compliance with guidance and identify areas for improvement. As a result, administration of the group was improved and issues around working with families were raised with CDOP.

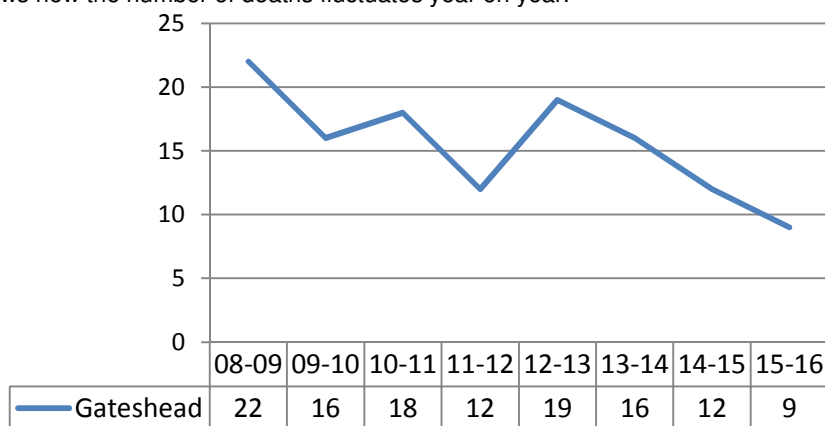
Following the development session, NHS Newcastle Gateshead CCG facilitated a meeting between South of Tyne CDOP and North of Tyne CDOP to learn from each other's processes. A follow-up meeting is planned pending the outcome of the national review of LSCBs and the child death review process.

Training has also been delivered to clinicians involved in child deaths.

#### Data or management information relevant to the sub group in 2015-2016

The CDRG collects and collates an agreed minimum data set of information on all child deaths in Gateshead. This data set reflects the national requirements from the DfE and is consistent with the data sets for the two other LSCBs represented on CDOP.

The LSCB has been notified of the deaths of nine children who were resident in the borough in 2015-2016. The following chart shows how the number of deaths fluctuates year on year.



Of these deaths five were of children with known life limiting conditions. There were four unexpected deaths, however some of those children also had medical issues. To date, no identifiable patterns or concerns have been noted within these deaths.

The South of Tyne CDOP met five times in 2015-2016 and completed the reviews of 17 deaths of children who had resided within Gateshead, of these modifiable factors were only identified in one case.

Recent deaths in Gateshead have usually been as a result of:

- Neonatal/perinatal events – prematurity

<ul style="list-style-type: none"> <li>Expected deaths with known life limiting conditions</li> </ul> <p>The number of unexpected deaths as a result of external factors remains small. There have been 331 deaths in the SOTW CDOP region since the process began in 2008.</p>
<p><b>Planned actions for 2016-2017</b></p> <p>The workload of the group is determined by local and national events and the group will continue to respond as appropriate.</p> <p>As stated above, the outcome of the national review of LSCBs may impact on the work of the sub group. This report was due to be published in March 2016 but is now expected in summer or autumn.</p> <p>Chairing arrangements will also be reviewed in 2016-2017, as will the role of the Designated Doctor for Child Deaths due to the retirement of the existing post holder. Any issues or delays in this area will be escalated to the Board.</p>

**Learning & Improvement Sub Group. Chair – Service Director Social Work, Children & Families (Debra Patterson in 2015-2016)**

<p><b>Purpose of the sub group</b></p> <p>The sub group has responsibility for monitoring the implementation of the action plans arising from SCRs undertaken by Gateshead LSCB. The group also undertakes Learning Reviews where the criteria for a SCR are not met and makes recommendations for improvement. The group also undertakes Appreciative Enquiries to reflect those cases where multi-agency work has had good outcomes for children and their family. The sub group also leads on disseminating messages from SCRs, Learning Reviews and Appreciative Enquiries across agencies,</p>
<p><b>Progress in 2015-2016</b></p> <p>As set out in section 6.4.2 of this report, no SCRs were published or initiated in Gateshead in 2015-2016. However, the sub group reviewed a number of cases where it was felt that there were lessons about single-agency and multi-agency practice.</p> <p>The Learning &amp; Improvement Framework was also reviewed by the group and judged by Ofsted to be “comprehensive” to represent a “proactive response”</p>
<p><b>Planned actions for 2016-2017</b></p> <p>The work of the sub group will be directed by local and national SCRs, Learning Reviews and Appreciative Enquiries.</p>

**Licensing Sub Group. Chair – LSCB Business Manager (Louise Gill in 2015-2016)**

<p><b>Purpose of the sub group</b></p> <p>The purpose of the Licensing Sub Group is to ensure that the LSCB fulfils its responsibilities as the “Responsible Authority” with regard to the ‘protection of children from harm’ being one of the objectives of the Licensing Act 2003.</p> <p>The sub group meets on a monthly basis and considers all applications submitted to Gateshead Council under the Licensing Act 2003 for premises licenses, club premises certificates and Temporary Event Notices (TENS). The group considers each application individually and determines whether there are any implications from a child protection or safeguarding point of view. Other aspects of the licensing process, such as anti-social behaviour, are considered by other responsible authorities.</p> <p>Gateshead Council is responsible for licensing activities under the Licensing Act 2003. The act requires that local authorities carry out their various licensing functions in order to promote the following four licensing objectives:</p> <ul style="list-style-type: none"> <li>The prevention of crime and disorder</li> <li>Public safety</li> <li>The prevention of public nuisance</li> <li>The protection of children from harm</li> </ul> <p>If any interested party of responsible body, such as the LSCB, is not satisfied that an objective is met then they can raise a representation against an application or request the review of an existing licence. The LSCB Licensing Sub Group focuses specifically on the 4<sup>th</sup> licensing objective. The applicant (or licensee if the issue relates to an existing licence) will be asked to provide further information and attend a hearing. In the case of new applications, this could lead to an application being refused, or granted with conditions, and in the case of an existing licence this could lead to a licence being revoked or new conditions added.</p>
--



**Progress in 2015-2016**

The sub group reviewed 47 applications for new premises licences, variations of existing licences or applications for the review of an existing licence in 2014-2015, this is an increase from 37 applications in 2014-2015. There were no safeguarding concerns with the majority of these applications and reassuringly most new applicants set out robust arrangements to protect children from harm on their premises, however there were some applications to note:

- A premises who had previously had their licence revoked for underage sales applied for a new licence with a different person named however this was withdrawn following objections made by the LSCB and other Responsible Authorities
- The LSCB supported a review application made by another Responsible Authority when a premises was found to be selling alcohol to a 15 year old child volunteer
- The LSCB supported a review application made by another Responsible Authority when a premises was found to be selling tobacco to children
- The LSCB supported a review application made by another Responsible Authority when a premises was found to be selling alcohol to a 14 year old child volunteer and the premises had also been found to have been selling Novel Psychoactive Substances (AKA Legal Highs), drug paraphernalia and “sex articles” (namely unlawful pornography) without an appropriate licence. The premises licence was ultimately revoked by the Licensing Committee due to the concerns raised and an application to transfer the licence to another individual was also refused.

The group also reviewed 195 TENs (an increase from 163 last year) and 71 Street Trading Applications (an increase from 47 last year)

In addition to the standard business of the sub group, the chair wrote and co-delivered training to approximately 700 taxi drivers licensed by Gateshead Council to raise awareness of CSE and their duties as licenced drivers to safeguard young people.

The LSCB Business Manager also utilised links between this group and the MSET to share concerns with the Licensing Authority, for example:

- Information was shared at MSET that young people under 18 were gambling large quantities of cash in the amusement arcade of a shopping centre, so the Licensing Authority arranged for a visit to be undertaken
- Information was shared at MSET that young people were shoplifting wine from a store as it was placed near the door, they were then congregating on wasteland and getting drunk and having sex. The Licensing Authority planned a visit to the store to speak to them about their layout
- Anecdotal information was shared at MSET about a premises in the borough where young people were able to purchase alcohol and were not challenged for ID and investigations were undertaken by the Licensing Authority

The LSCB Business Manager has also been involved in discussions with colleagues from Legal and Public Health about pilot scheme that Gateshead is going to be involved in. Gateshead will become one of eight pilot sites for a national alcohol licensing project in conjunction with Public Health England to assess the practicality of introducing health as a licensing objective (the four licensing objectives are currently prevention of crime and disorder, public safety, prevention of public nuisance and protection of children from harm). Any relevant learning or information from the pilot will be shared with Board members in due course

**Planned actions for 2016-2017**

- The chair of the sub group will continue to attend the Responsible Authorities Group on a quarterly basis and continue to liaise with other responsible authorities to ensure that due consideration is given to the 4<sup>th</sup> licensing objective
- The sub group will consider ways in which they can be more proactive in relation to assisting licence holders and applicants to protect children from harm on their premises
- The chair will continue to link the work of the sub group with other partnerships, such as the MSET and Strategic CSE and Trafficking Sub Group, to improve outcomes for vulnerable children and young people

## Missing, Sexually Exploited and Trafficked Sub Group (MSET). Chair – Detective Inspector, Protecting Vulnerable People (Dan Mitford in 2015-2016)

### Purpose of the sub group

The purpose and remit of the MSET is to safeguard those children and young people in Gateshead who repeatedly go missing and/or are at risk of sexual exploitation and/or exhibit risk taking behaviour and/or where there are concerns about human trafficking. The purpose of the group is to reduce the risks to the young people when missing and to introduce strategies to safeguard them

### Progress in 2015-2016

The MSET is now a well-established meeting that has excellent attendance by partner agencies, with National Probation Service now attending following the recent deep dive inspection in South Tyneside (this has strengthened intelligence sharing and disruption). The meeting is chaired by the Detective Inspector from Central PVP CAVA who is supported by the Police Missing from Home Coordinator. The Missing From Home coordinators co-located with the coordinators who cover the whole Northumbria Police area, ensuring intelligence, trends and issues can be shared and fed back into the Operational MSET group. The meeting incorporates a referral form which includes a vulnerability check list (VCL) and scoring matrix for each young person to be discussed at the meeting.

The social worker or other lead professional for each young person is invited to attend the meeting and present the concerns relating to the young person. It is expected that a prevention/diversion plan is prepared in advance of the meeting and then relevant actions are allocated during the meeting to reduce risks associated with sexual exploitation and trafficking and/or reduce missing episodes. For cases of concern, subsequent dates are set for the case to be reviewed at a MSET meeting with the expectation that all actions are completed for the next meeting and an updated VCL submitted when the young person is next discussed. The scoring matrix is reviewed at each meeting with the intention that this risk score reduces over time showing a reduction in risks.

A pre-meet between the sub group chair and LSCB Business Manager takes place prior to the MSET meeting to discuss the top 10 most active children and referrals received from practitioners who are concerned about frequent missing episodes and/or risk of CSE. The agenda for the meeting is then prepared and circulated for agencies to research their involvement.

Members of the MSET continue to monitor the return interview process to ensure consistency in the interviews. Information gathered in the interviews is shared with the police for intelligence sharing via a secure email mailbox.

The joint protocol between Police and the local authority has been reviewed, updated and agreed by partner agencies.

The MSET continues to monitor and evaluate intelligence around sexual exploitation and has close links with Operation Sanctuary, which has recently expanded to include the South of Tyne area.

An escalation process has been developed for cases discussed at MSET where there are consistent high risk concerns for a young person or they are deemed at high risk of CSE. This will allow cases of concern to be forwarded to senior management for review to ensure that no additional actions are required and for guidance as to whether the case should continue to be discussed at MSET.

### Data or management information relevant to the sub group in 2015-2016

Data on missing children is also set out in section 6.3.1 of this report.

The cases of 43 young people were discussed at MSET meetings in 2015-2016 and 23 of these young people were discussed on more than one occasion (a number had also been discussed in 2013-2014). This was a decrease in the total number of cases discussed in 2014-2015 where there were 53. This decrease is due in part to the revised MSET referral form which means that cases are referred more appropriately with tangible risks set out for the pre-meeting.

There were a total of 928 occasions in 2015-2016 where a young person from Gateshead was reported missing to the police (this includes episodes where a child was in the care of Gateshead Council but placed outside of the borough). The 928 episodes included 657 episodes (71%) where a child was reported missing from care, the remaining 271 episodes related to a child being reported missing from their family home or school. The total figure of 928 represents an increase from 2014-2015 where there were 864 episodes. There was also an increase in the number of missing from care episodes from 571 to 657 and an increase in the proportion of episodes from 66% to 71%. The missing from care episodes have increased significantly year on year for the past few years.

The number of episodes relate to a smaller number of individual young people as there were a number of young people who were reported missing more than once. In fact, there was a small cohort of young people who

reported missing care on a very regular basis, often together, some months, and this in part explains the large increase in episodes. It should also be noted that there was an increase in the number of episodes lasting over 24 hours, and a number of episodes which lasted significantly longer. Processes are in place to ensure that there is regular oversight of these cases.

Northumbria Police introduced a new “absent” category on 25 January 2016 and all “missing” reports will now be classed as either missing or absent. For the purposes of MSET, cases will be considered regardless of whether they are missing or absent and return interviews will also be offered regardless of the police category.

A breakdown of the episodes reported each month is set out below. More detailed data on where Looked After Children are reported missing from is reported to Gateshead Council Overview and Scrutiny Committee on an annual basis.

Month	Total missing episodes	Missing from care episodes
April	91	77 (85%)
May	116	80 (70%)
June	72	59 (82%)
July	81	63 (78%)
August	76	63 (83%)
September	82	55 (67%)
October	71	47 (66%)
November	76	46 (61%)
December	77	43 (56%)
January	54	40 (74%)
February	65	49 (75%)
March	67	35 (52%)
<b>TOTAL</b>	<b>928</b>	<b>657 (71%)</b>

#### Planned actions for 2016-2017

Within the next 12 months:

- The group will continue to review those cases referred into it to support multi-agency ownership of risk and safeguarding. Practitioners will also be encouraged to be more proactive with referrals into the group
- The sub group will continue to strengthen the risk assessment process and scoring matrix so that there is a clear exit and entry point for the MSET
- Regular meetings between Police and the Gateshead Council children’s homes managers are to continue to discuss cases of problematic or regular missing persons
- A revised procedure for recording missing and absent episodes for young people by the Police is now in place. Both absent and missing episodes are risk assessed and scrutinised to ensure the appropriate assessment and response is in place. Children’s home staff have been spoken to by the Missing from Home Coordinator around the new process and how to challenge any classification and subsequent Police action.

### Performance Management Sub Group. Chair – Service Manager Children’s Commissioning and Performance (Ann Day in 2015-2016)

#### Purpose of the sub group

The purpose of the Performance Management Sub Group is to support the LSCB in fulfilling its statutory duty to monitor and evaluate the effectiveness of what is done by the local authority and Board partners, individually and collectively, to safeguard and promote the welfare of children, and advise them on ways to improve.

Continuous performance management is at the core of ensuring the effectiveness and impact of inter-agency safeguarding activity. The sub group supports the LSCB in the monitoring, promotion and planning of high quality practice in line with the inter-agency Performance Management Framework. The framework is used to monitor and analyse a range of quantitative and qualitative information, both via ongoing and set pieces of work. The sub group reports regularly to the Board highlighting any areas of practice that need to be addressed, and identifying areas of good practice.

#### Progress in 2015-2016

The sub group continued to embed the integrated data set and provide detailed performance information to the full LSCB on a quarterly basis. This regular reporting to the Board includes an overview of performance in relation to safeguarding and early help across all partners.

The performance information provided to the Board has supported the Board's determination of priorities and specific areas for additional scrutiny.

Professional and public awareness of child sexual exploitation (CSE) has grown significantly in recent years the Board therefore wished to scrutinise and determine on a multi-agency basis levels of CSE in Gateshead, develop a clear understanding of CSE, agree a collective approach to data sharing and quality assure the effectiveness of the multi-agency approach.

The sub group led the inquiry reviewing 37 cases and undertaking deep dive audits on 10 of those cases.

The inquiry looked at how children and young people are being identified and protected and sought to understand where there may be lessons to be learned from an audit of practice.

The results were reported to the Board in May 2016.

#### **Data or management information relevant to the sub group in 2015-2016**

See section 6.5. of this report

#### **Planned actions for 2016-2017**

During 2016-2017 the sub group will continue to provide to develop and enhance performance reporting to the Board. There will be a specific review and remodel the integrated data set in line with Ofsted recommendations and Board priorities.

The sub group will continue to undertake multi-agency audits to quality assure partner agencies collective approaches to Safeguarding and Early Help

### **Policies and Procedures Sub Group. Chair – LSCB Business Manager (Louise Gill in 2015-2016)**

#### **Purpose of the sub group**

Gateshead LSCB has a statutory requirement to provide policies and procedures for safeguarding and promoting the welfare of children

**Regulation 5 of the Local Safeguarding Children Board Regulations 2006** sets out that the functions of the LSCB, in relation to the above objectives under section 14 of the Children Act 2004, are as follows:

1. (a) developing policies and procedures for safeguarding and promoting the welfare of children in the area of the authority, including policies and procedures in relation to:

The action to be taken where there are concerns about a child's safety or welfare, including thresholds for intervention

The aims and purpose of the sub group are to:

- Develop policies and procedures for safeguarding and promoting the welfare of children and young people in Gateshead
- Monitor the effectiveness of the procedures in place
- Consider the implications of new policy, legislation, research and guidance in respect of safeguarding and promoting the welfare of children
- To review and accordingly update the Gateshead LSCB Inter-Agency Child Protection Procedures (currently in conjunction with TriX)

#### **Progress during 2015-2016**

In line with the current maintenance contract with TriX, two full updates of the LSCB Inter-Agency Child Protection Procedures were made in 2014-2015 to reflect changes to statutory guidance. The sub group also reviewed the arrangement with TriX to determine whether it was the most effective option and we have now entered into a sub-regional agreement with TriX and Sunderland and South Tyneside. This has considerably reduced the cost paid by Gateshead LSCB for the online procedures

The following pieces of work were also completed or are currently ongoing:

- Female Genital Mutilation
- Osman Warnings
- SUDI guidelines
- Templates for child protection conference reports
- Bruising in babies
- Concealed pregnancies

**Planned actions for 2015-2016**

Work will continue in relation to the following areas:

- The new Care Act
- Modern Slavery Bill
- Parents recording child protection conferences
- Use of technology to support attendance at meetings
- Breast ironing

The sub group will also respond to new areas of business as they emerge and ensure that procedures are compliant with any new guidance.

The sub group will also review its own membership to ensure that it is fit for purpose as a number of members have recently changed roles or left organisations.

**Strategic CSE and Trafficking Sub Group. Chair – Detective Chief Inspector (Shelley Hudson in 2015-2016)**

**Purpose of the sub group**

This is a relatively new sub group of the LSCB that was established in 2014-2015, having previously been a time-limited working group of the Board. The group has since merged with a task and finish group of the Safeguarding Adults Board however to create a joint Strategic Exploitation Group, which will begin reporting to the Board in 2016-2017.

The remit of the group was to lead on the development of strategic work in relation to CSE and trafficking. On behalf of the LSCB, the group was tasked with developing, implementing and monitoring the Gateshead LSCB CSE strategy and delivery plan to ensure a coordinated and proactive multi-agency response to CSE and trafficking.

**Progress in 2015-2016**

The group established and strengthened its Terms of Reference and developed a Delivery Plan which set out key areas of work in relation to safeguarding children at risk of CSE and being exploited. The group finalised the CSE Strategy, which was scrutinised by Ofsted and found to be sound.

**Planned actions for 2016-2017**

As previously stated, this group has now been disbanded and a new joint LSCB and SAB Strategic Exploitation Group has been formed. The Terms of Reference for the group have been agreed and the work plan is being established

**Training Sub Group. Chair – Workforce Development Adviser (Naju Khanom in 2015-2016)**

**Purpose of the sub group**

The purpose of the group is to develop and promote, through training, a shared understanding amongst safeguarding partners around the tasks, processes, principles, roles and responsibilities for safeguarding children and promoting better outcomes.

The sub group contributes to identifying training needs and the delivery of the training programme across the workforce and drives forward the programme. The sub group is made up of a variety of professionals from different sectors and services.

Training is delivered with a focus on the children and young people’s workforce. Training may also be influenced by any new agendas or initiatives.

The group also supports, monitors and quality assures single agency training activity by LSCB partner agencies to ensure that minimum standards are reached.

**Progress in 2015-2016**

The 2015-2016 Children and Adults Safeguarding Training Directory was launched on 1 April 2015 and work took place throughout the year on the 2016-2017 directory in preparation for its launch. Over 70% of the courses in 2015-2016 were delivered “in house” by staff from LSCB partner agencies and the rest were commissioned.

The e-learning programme continued to be promoted and strengthened.

There was a delay in progressing some of the work of the sub group in 2015-2016 due to changes in personnel however the chair returned from maternity leave part way through the year and good progress was made from

that point.

### Data or management information relevant to the sub group in 2015-2016

Multi-agency training is offered to all services and LSBC partner agencies. Records are kept in terms of the attendance a training by individual services and feedback is submitted to the LSCB on a regular basis in relation to attendance, cancellation and demand. This enables future planning.

There were 61 events held in 2015-2016 through the LSCB training directory (an increase from 52 events in the previous year). There were in fact 73 events arranged however 12 events were cancelled due to low numbers or trainer availability.

In total there were 1115 attendees, an increase from 1081 in the previous year. 763 people also accessed the online e-learning. There were 289 unsuccessful applicants who were not offered places at training events (up from 176 in the previous year) and unfortunately there were 151 applicants who were offered places who failed to attend (compared to 164 in the previous year).

#### Classroom training in 2015-2016:

Course	Attendees	Did not show	Unsuccessful	Cancelled prior to event	% applicants trained
Child Death Reviews	15	4	0	5	63%
CP awareness	250	37	88	64	57%
Child Trafficking	43	1	0	4	90%
Common Assessment Framework	107	17	6	26	64%
Cross cultural awareness	17	1	0	0	81%
Effective CP Conferences	10	3	0	6	50%
Effective Core Groups	0	0	0	0	0%
Fabricated and Induced Illness	56	6	16	4	73%
Female Genital Mutilation	57	4	8	10	70%
Foetal Alcohol Syndrome	24	5	0	3	75%
Information sharing in practice	9	1	0	2	32%
Multi-agency working to safeguard and protect children	48	3	25	19	45%
Neglect	42	9	17	6	50%
Protecting disabled children from Abuse	30	1	0	20	59%
Responding to allegations of abuse against professionals	12	4	5	4	38%
Safeguarding babies	20	2	0	2	83%
Safeguarding children and young people in the digital age	129	15	39	24	62%
Serious Case Reviews	18	5	0	24	32%
The impact of drug use on young people	32	5	23	3	51%
The impact of parental mental health	41	1	10	13	63%
Understanding and responding to child sexual abuse	36	5	12	7	60%
Young people at risk of sexual exploitation	82	17	35	16	51%
Young people who self-harm	73	5	5	20	71%
<b>TOTAL</b>	<b>1151</b>	<b>151</b>	<b>289</b>	<b>271</b>	<b>59%</b>

## Online training in 2015-2016:

<b>Module</b>	<b>Completions</b>	<b>Yet to complete</b>
An introduction to safeguarding children	183	3
Awareness of child abuse and neglect - Core version	159	8
Awareness of child abuse and neglect - Foundation version	56	9
Awareness of child abuse and neglect - young people version	18	0
Awareness of child abuse and neglect core level - Police version	1	1
Awareness of domestic violence and abuse including the impact on children, young people and adults at risk	22	1
Hidden Harm	15	2
Safeguarding and leadership	24	3
Safeguarding children from abuse by sexual exploitation	103	11
Self-harm and suicidal thoughts in children and young people	2	0
Think Safe, Be Safe, Stay Safe	4	0
Female Genital Mutilation: Recognising and Preventing	176	2
<b>TOTAL</b>	<b>763</b>	<b>40</b>

**Planned actions for 2016-2017**

Going forward the Training Sub Group will look at:

- Promoting the directory across organisations and to the people who will benefit from training.
- Encourage registration for the new online booking system.
- Increase training pools.
- Work on implementing Ofsted recommendations
- Work to develop any training areas identified by the LSCB

Gateshead Council has implemented a new HR & Payroll system which includes the ability to book onto training, this system has been extended so those external to Gateshead Council can also use the system to book onto training. Work will continue with this system so that the LSCB can ensure that training meets demands and is effective.

## APPENDIX 6 – Glossary

ACPC	Area Child Protection Committee
ARMG	Adolescent Risk Management Group
CAF	Common Assessment Framework
Cafcass	Children and Family Court Advisory Support Service
CCG	Clinical Commissioning Group
CDOP	Child Death Overview Panel
CIN	Child In Need
CIN assessment	Child In Need assessment
CP plan	Child protection plan
CQC	Care Quality Commission
CRC	Community Rehabilitation Company
CSE	Child Sexual Exploitation
CCG	Clinical Commissioning Group
DCLG	Department for Communities and Local Government
DfE	Department for Education
DoH	Department of Health
DoLs	Deprivation of Liberty Safeguards
FGM	Female Genital Mutilation
FIT	Family Intervention Team
FT	Foundation Trust (NHS)
FTE	First Time Entrant (to Youth Justice System)
GHNFT	Gateshead Health NHS Foundation Trust
HMIC	Her Majesty's Inspector of Constabulary
ICPC	Initial Child Protection Conference
LAC	Looked After Child
LADO	Local Authority Designated Officer
LSCB	Local Safeguarding Children Board
MARAC	Multi Agency Risk Assessment Conference (for domestic abuse)
MAPPA	Multi Agency Public Protection Arrangements
MASH	Multi Agency Safeguarding Hub
MCA	Mental Capacity Act
MSET	Missing, Sexually Exploited and Trafficked Sub Group (sub group of LSCB)
NICE	National Institute for Health and Care Excellence
NTW	Northumberland, Tyne and Wear NHS Foundation Trust
PRU	Pupil Referral Unit
PVP	Protection of Vulnerable People Department (Police)
QA	Quality Assurance
RCPC	Review Child Protection Conference
SAB	Safeguarding Adults Board
SCR	Serious Case Review
SILP	Significant Incident Learning Process
STFT	South Tyneside NHS Foundation Trust
TAF	Team Around the Family
VAWGS	Violence Against Women and Girls Strategy
VCL	Vulnerability checklist
YOT	Youth Offending Team